

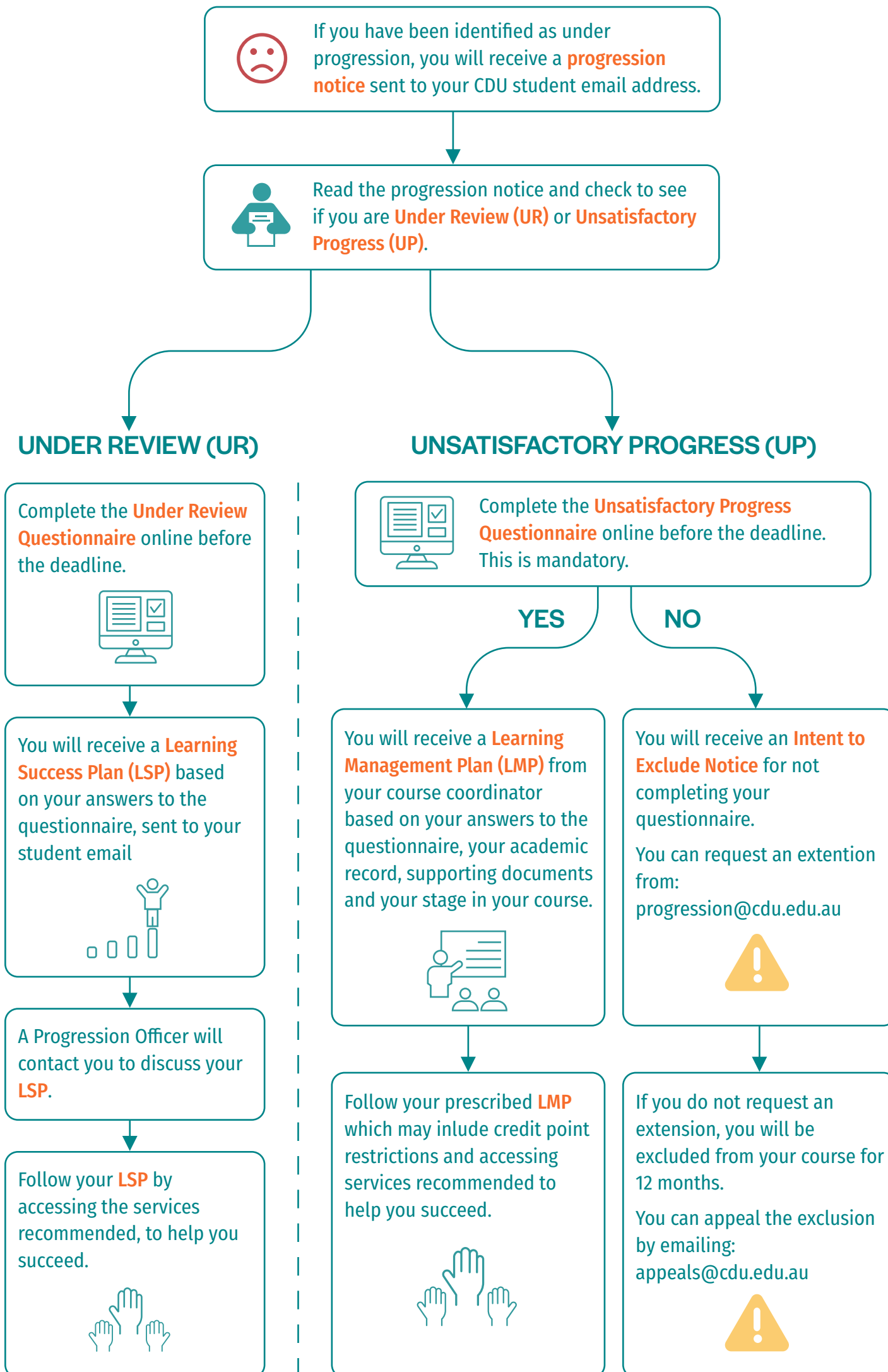
Received an Under Progression Notice?

DON'T PANIC!

ACADEMIC PROGRESSION

The Academic Progression Process ensures that students receive the support they need to successfully complete their course.

After grade release of Semester 1 and Semester 2, log into MyStudentInfo to check your grades.



WHAT IS UNDER PROGRESSION?

You are considered to be UNDER PROGRESSION when you have been identified as UNDER REVIEW (UR) or UNSATISFACTORY PROGRESS (UP)

WHAT IS UNDER REVIEW (UR)?

You will be UNDER REVIEW when:

- you fail the same unit twice, or
- you fail 50% or more of the credit points attempted

WHAT IS UNSATISFACTORY PROGRESS (UP)?

You are UNSATISFACTORY PROGRESS when:

- you have previously been Under Review, and
- you fail the same unit three times or more, or
- you fail 50% or more of the credit points you attempted

ABOUT THE QUESTIONNAIRE

The questionnaire asks for the reasons you have failed. It is mandatory that you complete this questionnaire to avoid being excluded from your course for 12 months. ⚠️

WHAT DOES EXCLUSION FOR 12 MONTHS MEAN?

This means that you cannot enrol back into your course for the next two semesters of Semester 1 and Semester 2, which constitutes one academic year.

EXCLUSION – WHAT HAPPENS NEXT?

You cannot enrol in a course at the same or higher level for the period of exclusion (12 months). You can apply to study a lower level course.

Can I return back into my course?

Yes, after the exclusion period, contact progression@cdu.edu.au about returning to your studies.

