



CDU Open Day – Staff Briefing

Recognition of Traditional owners and Indigenous cultures

Charles Darwin University acknowledges the traditional custodians of the land on which we're meeting and pays respect to Elders both past and present and extends that respect to all Aboriginal and Torres Strait Islander people.





CDU Open Day

Sunday 29 August
CDU Stadium, Marrara
10am - 2pm

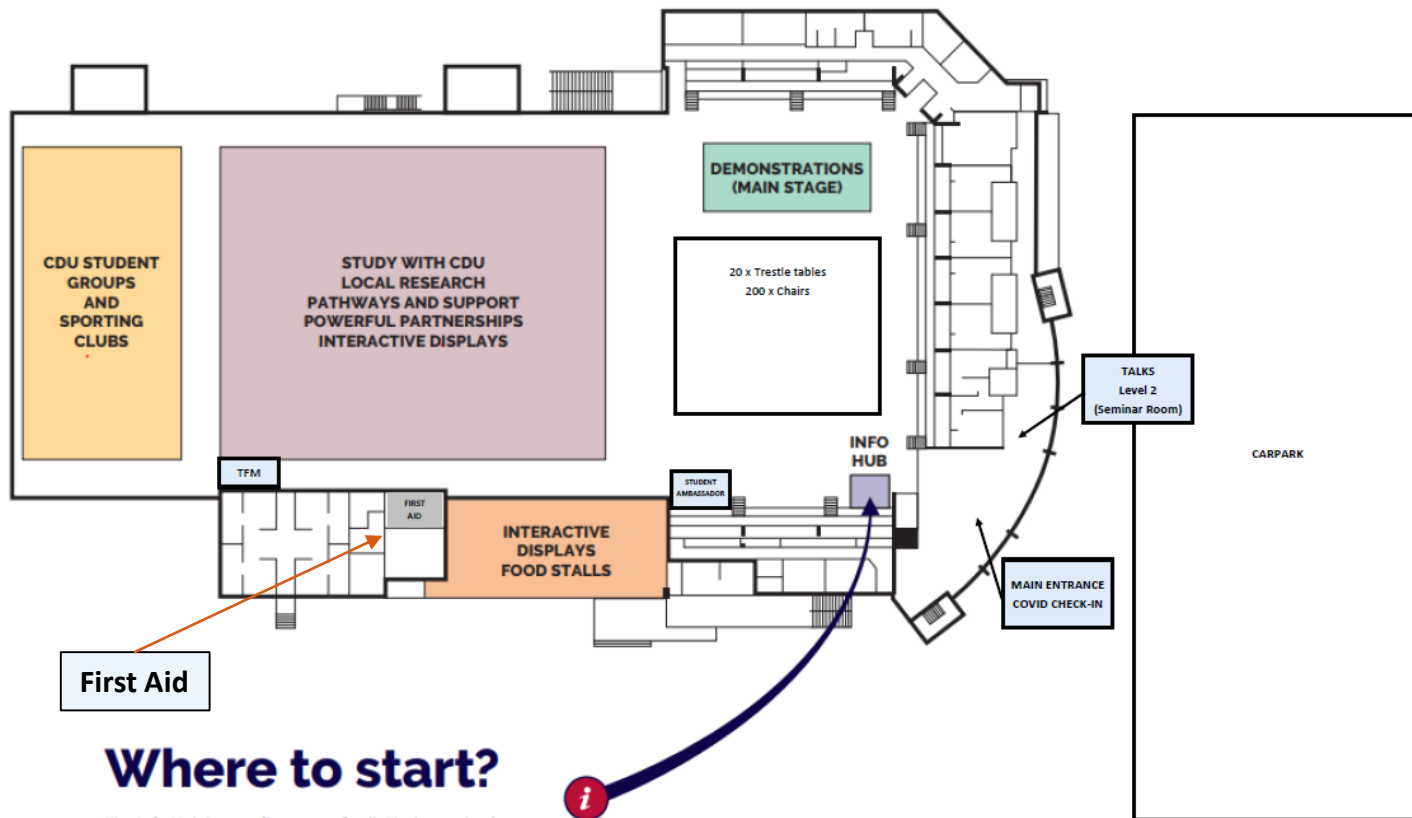
Join us at our new location for 2021.

Explore over 300 courses, talk with our staff and students and participate in workshops, demonstrations and interactive activities.

Register at cdu.edu.au/openday



CDU Stadium



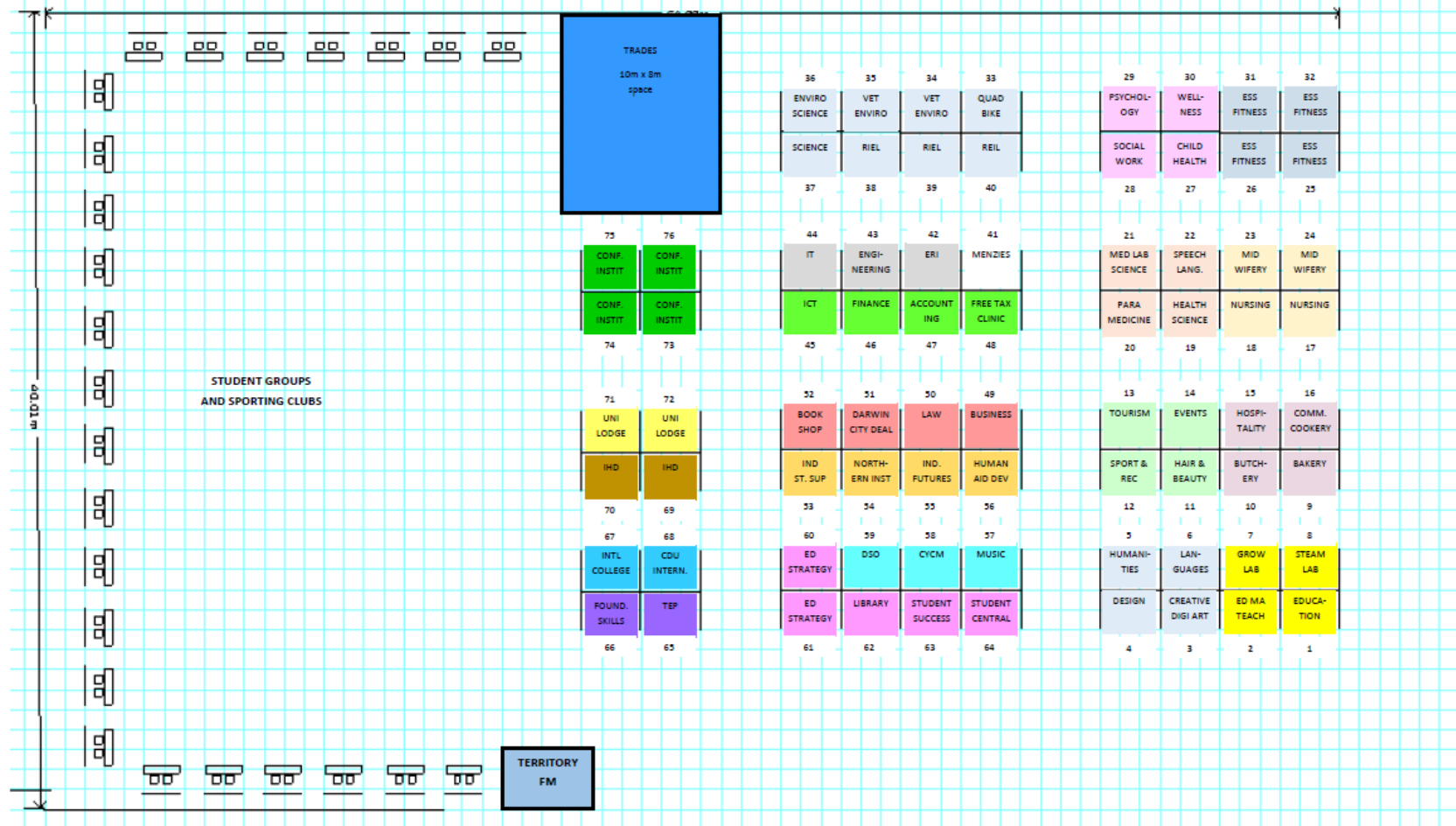
First Aid

Where to start?

The Info Hub is your first port of call. Find out what's on where, and plan your day.



CDU OPEN DAY - CDU STADIUM (COURTS 2 / 3 / 4)



CDU OPEN DAY - CDU STADIUM (OUTSIDE)

NETBALL COURTS

16m

RIEL
Trailer
ATV

RIEL
6m x 3m Marquee

Access driveway

BBQ

LA FRENCH
CREPES

KATJYA'S
POPCORN

FOOD STALLS

CANTEEN

St John's
Ambulance

23m

Exercise and
Sport
Science
Paramedicine
6m x 3m
Marquee

Check out your speed
and movement -
Timing gate sensors

NETBALL COURTS

Nursing and
Midwifery
3m x 3m
Marquee

Aeromedical
Simulator
10m x 6m

CANTEEN

CANTEEN

ENTRY/EXIT

Nest Box Activity

Bump In/Out

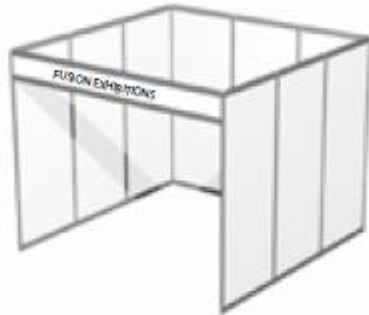
Set up:

- Friday 27 August (3pm – 4.30pm)
- Sunday 29 August (7am – 9.45am)
 - All displays MUST be set up by 9.45am

Pack up:

- From 2pm onwards (please do not pack up early)

Exhibition



Each 3 x 2m Booth includes:

- Back wall , 2.4m high
- Fascia Panel
- 1 x 4 amp power outlet with 4-way power board
- 1 x trestle table with tablecloth
- 2 x chairs

Student Groups and Sporting Clubs



Each 2 x 1m Booth includes:

- Back wall , 2.4m high
- 1 x trestle table with tablecloth
- 2 x chairs
- Velcro compatible

COVID-19 Event Safety Requirements

- All staff, students and visitors must check-in via Territory Check-in App on arrival.
- Hand sanitiser stations will be at the main entrance, plus available on most displays throughout the venue.
- Signage to encourage social distancing is placed around the venue.

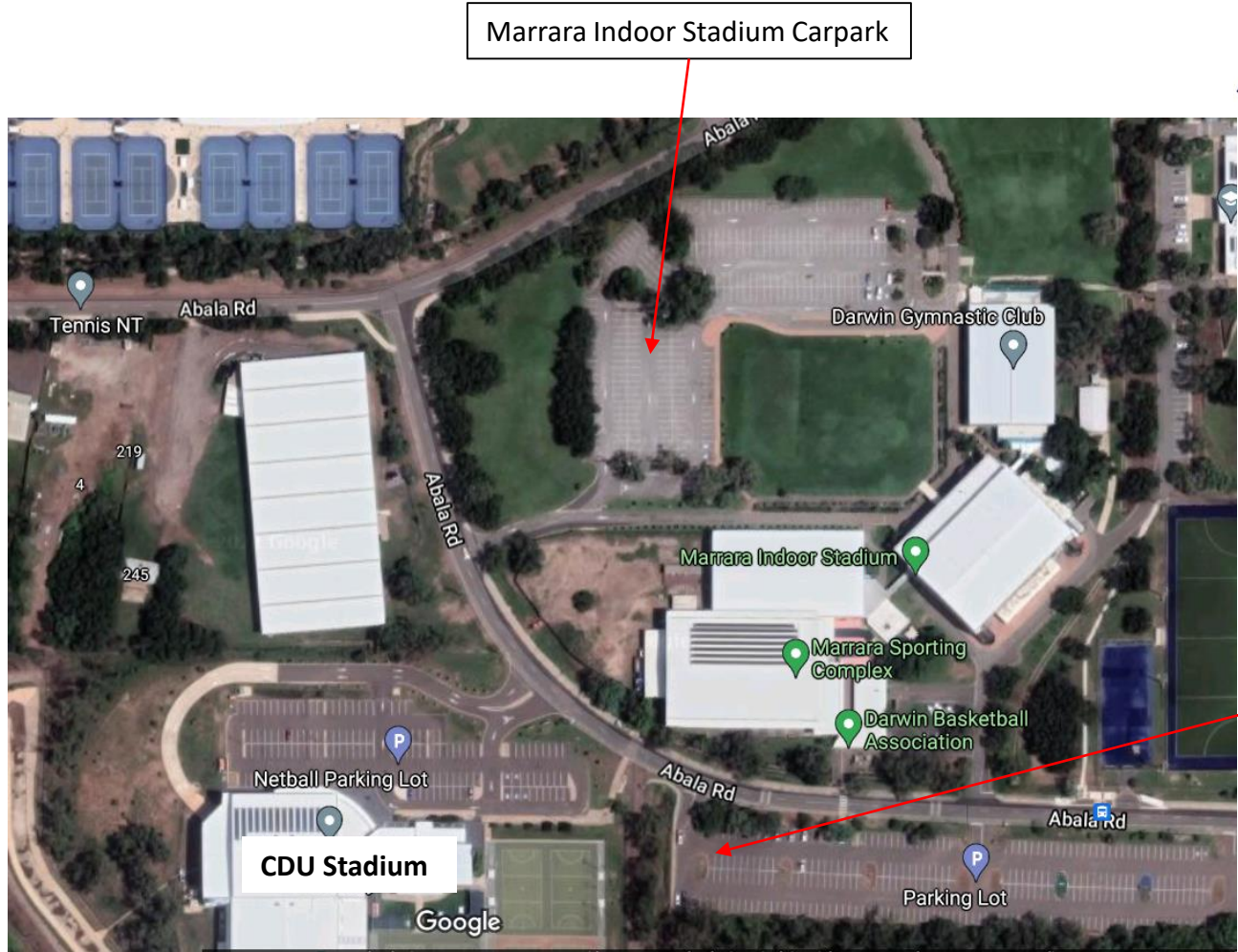
COVID-19 Event Safety Requirements

- If you have a display/activity where visitors will be touching/lifting/using equipment, please ensure it is wiped down with anti-bacterial wipes after each use.
- Venue staff will be monitoring high-traffic areas throughout the event and wiping down surfaces etc.

Security and Parking

- There will be security on-site, at the main entrance ensuring visitors check-in and adhere to COVID-19 guidelines.
- Please don't leave valuables unattended in the booths or where your activity is located.
- Staff are asked to park in the adjacent Marrara Indoor Stadium and Darwin Basketball Association car parks to allow closer carparks for visitors.
- There will be a CDU Shuttle Bus doing a loop of the carparks to pick up staff who park in those carparks.

Parking



Marrara Indoor Stadium Carpark

Darwin
Basketball
Association
Carpark

Medical and Emergency Services

- St John's Volunteers will be onsite for the duration of the event.
- In the event of an emergency, please call **0429 369 958** or notify Event staff or Security.
- If there is a serious incident that requires Police, First or Ambulance, please call 000 first, then notify Event staff.
- If there are any lost children – please bring them to the Info Hub and an announcement will be made on the Main Stage.

EVACUATION DIAGRAM
NT NETBALL
 235 ABALA ROAD
 DARWIN, 0812 NORTHERN TERRITORY

EMERGENCY PROCEDURES



OPERATE THE NEAREST FIRE ALARM IF APPLICABLE & WARN OTHER OCCUPANTS



LEAVE THE BUILDING BY THE NEAREST AND SAFEST AVAILABLE EXIT & PATH OF EGRESS. DO NOT RUN.



REPORT TO THE FIRE WARDENS IN CHARGE OF THE ASSEMBLY POINT AND FOLLOW INSTRUCTIONS



DO NOT RE-ENTER THE BUILDING UNTIL AUTHORIZED TO DO SO BY THE FIRE WARDENS

 **000**

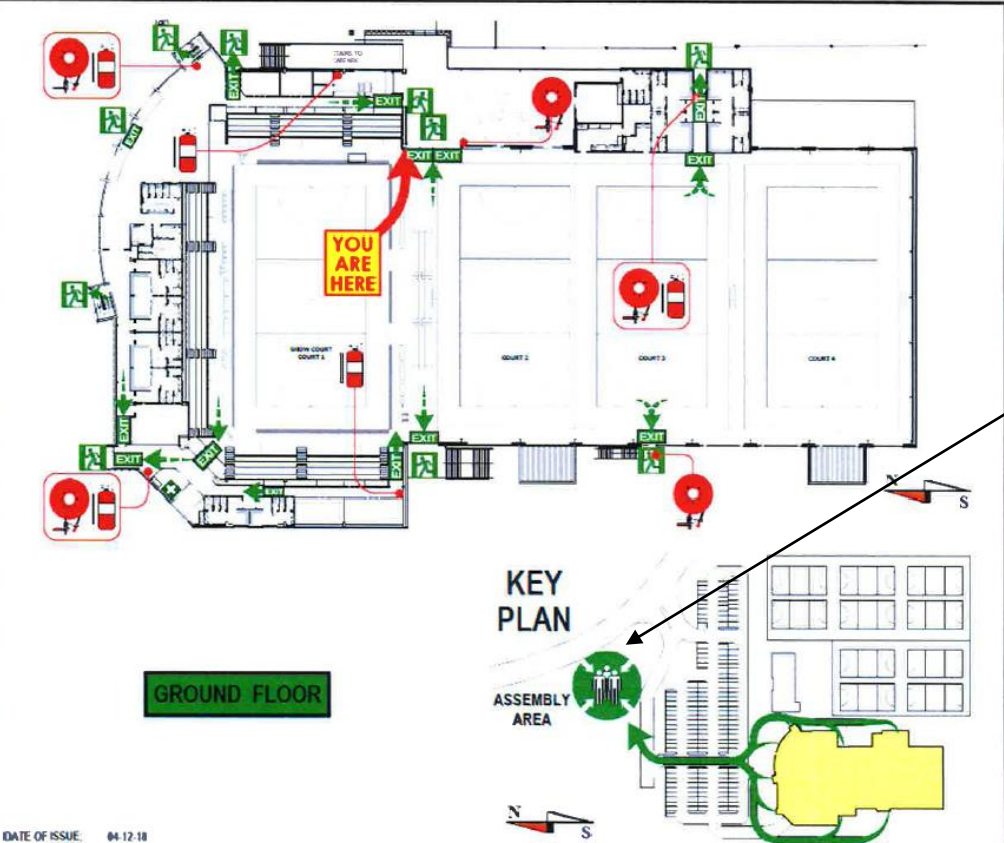
EMERGENCY
AMBULANCE
FIRE
POLICE

FIRE EXTINGUISHER

HOW TO USE:

1. IF THUNDER TO DO SO
2. PULL THE PIN
3. AIM AT THE BASE OF THE FIRE
4. SQUEEZE THE TRIGGER
5. SWEEP SIDE TO SIDE





Emergency Evacuation point (Outside in carpark)

IT Requirements

- All 3m x 2m booths will have power supplied.
- There is free WiFi access available within the centre, however the signal strength can drop out at times depending what court you are on.
- If your activity/display requires internet access, please let us know.

Student Ambassadors

- Student Ambassadors will be assisting throughout the event.
- On arrival, please report to the Student Ambassador Hub and see Volunteer Coordinator (**Irta Oakley**)



T-Shirts and Meal Vouchers

- Staff should have already collected their CDU T-shirt (if required) and meal voucher.
- Meal vouchers can be used at any of the food stalls on the day.

Food Stalls

- Just Coffee (available at entrance from 8.30am)
- Mouza's Canteen
- Katja's Popcorn
- La French Crepes
- Rotary Club Sausage Sizzle

Info Hub

- The Info Hub is located near the main entrance.
- Staff / student ambassadors will be on hand to answer general questions or direct visitors as required.

Secondary Schools Event

- Pre-Event for Secondary Students
- Will hear from current students, starts at 9.30am
- Approx. 100 students including 45 students participating in the Bidjipidji Program and Aspire students.

Free travel – Darwin bus network

- Visitors can access free travel on the Darwin bus network.
- Bus stops just outside Darwin Basketball Stadium.



FREE BUS TRAVEL

Darwin Bus Service will
provide free travel to
CDU Stadium, Marrara
from 9am – 3pm.

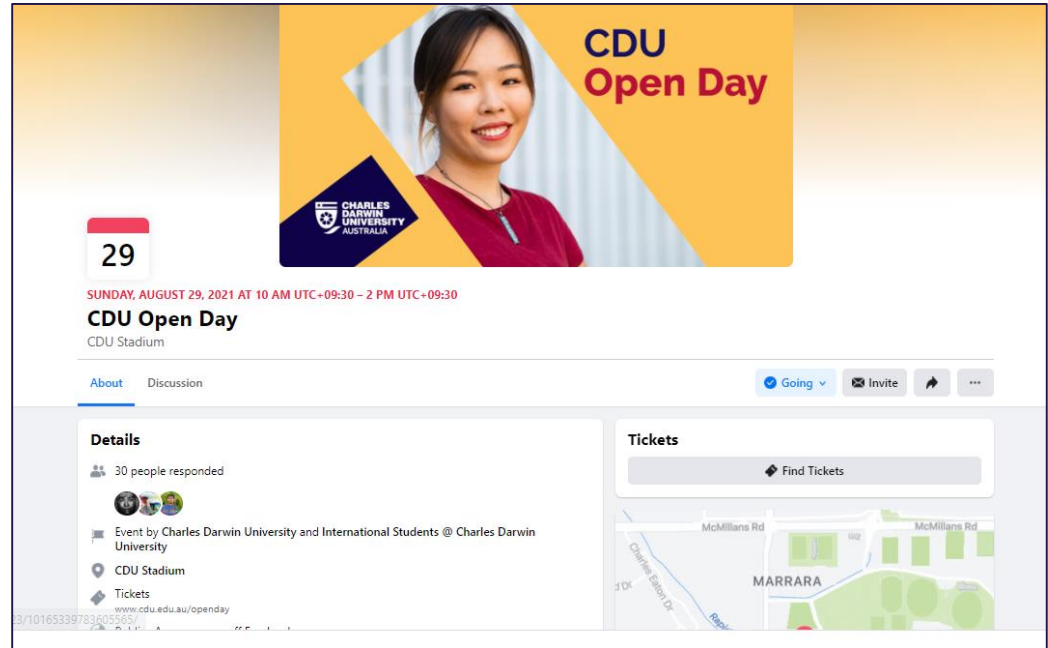
Promotion

For all social content:
(Facebook, Twitter, Instagram)

Hashtag

#CDUOpenDay #cduni


Please share on your social
media pages



Lead capture

- Visitors on the day encouraged to enter the competition.
- If visitors want further follow up please direct them to Student Central booth.
- They can assist visitors, book a follow-up call or assist with applying or enrolling.
- We would like to convert as many prospective students as possible!

**WIN the
Ultimate
Study Pack**



Register at cdu.edu.au/openday
and you'll go into the draw to win
an Apple iPad, AirPods, Pencil and CDU prize pack.
Terms and Conditions apply.

Key Contacts



Marissa Briston
GENERAL
0429 369 958



Athena Ferreras
GENERAL / OUTSIDE
0448 675 512



Irta Rachman
STUDENT AMBASSADORS
0477 759 663



Nandini Puranik
DEMONSTRATIONS (MAIN STAGE)



Tanya Weatherstone
TALKS
0429 486 242



Jaime McCartney
HIGH SCHOOLS/ INFO HUB
0436 645 614



Trisha Mellow
TRADES / EXHIBITIONS
0437 528 384

Questions?

