



Charles Darwin University

Undergraduate
Nursing and Midwifery

A new world university



Study with a leader in online learning

At Charles Darwin University, we believe your unique experiences, perspectives and opinions make us a highly ranked, new world university. You make CDU.

Charles Darwin University has been delivering online and distance learning for more than 30 years. We're a top 2 Australian university for graduate employment outcomes* and a top 100 university globally for quality education.**

Located in northern Australia, we teach more than 24,000 students across Australia and the globe through flexible, online learning, at 11 campuses and training centres, and in more than 100 regional and remote locations.

We offer more than 300 degrees, diplomas and certificates, spanning health, nursing, education, environmental science, business, the arts, Indigenous knowledges and more.

#2

for graduate
employment
outcomes

Top
100

globally
for quality
education

30+

years' distance and
online learning

* Good Universities Guide 2022

** Times Higher Education Impact Rankings 2021

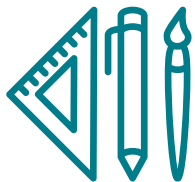
Learn in an easy-to-use online classroom

Whether you study online or on campus, you'll have access to our easy-to-use online learning platform, Learnline. It's powered by world-class technology and a team of staff and academics who have been teaching online for decades.



24/7 academic and technical support

Access your very own study-specific online tutoring service, including feedback on draft assignments to help you learn and improve. We also offer round-the-clock technical support via email, call and chat to ensure you stay connected.



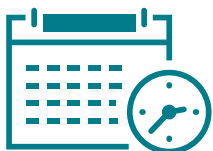
Collaborate effectively

Find clear, simple and responsive learning tools to collaborate and manage your time more effectively.



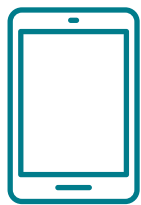
Choose your format

Access your learning materials in text, video or audio.



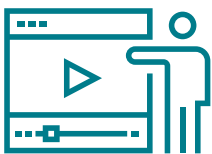
Due date reminders

Stay organised with Learnline's calendar, which automatically keeps track of due dates for your assessments and exams. Choose how you'd like to be reminded of tasks, assessments, exams and grades.



Access on any device

Attend your lectures and access learning materials on desktop, laptop or mobile device. Upload your assignments from anywhere and on any device.



Stream live or catch up later

Take part in interactive lectures and group discussions live or download recordings or resources to access later.



100% flexible nursing and midwifery degrees

Join us to study a nationally-recognised nursing or midwifery degree online or on campus. We know life's busy, so you can switch between part-time and full-time study as you need. And we'll organise your placements close to home – wherever you live in Australia.

With a shortfall of nurses and midwives in Australia, you will be highly employable and find job security within hospitals and other health service providers.* There's never been a better time to pursue a career in nursing or midwifery.

At Charles Darwin University, you'll learn to deliver evidence-based care to people of all ages, from pre-conception to end of life, and graduate with the freedom to work anywhere in Australia.


* Health Workforce Australia 2014: Australia's Future Health Workforce – Nurses Detailed



Why choose CDU for nursing and midwifery

- **100% flexible to study online** or on campus, part-time or full-time.
- **Graduate job ready** like the 94% of our nursing students who find employment on graduating.*
- **Join a vibrant nursing and midwifery community** of more than 5,500 students studying with us across Australia.
- **Complete placements close to home** wherever you are in Australia and clinical simulations in most major Australian cities.
- **A unique rural, remote and Indigenous health focus** will prepare you for the extraordinarily diverse roles in nursing and midwifery.

* 2020 Graduate Outcomes Survey National Report

A portrait of Professor Catherine Turner AM, a woman with blonde hair, smiling. She is wearing a dark blue top. The background is a blurred indoor setting, possibly a laboratory or office, with various equipment and shelves visible. A large, semi-transparent red shape is overlaid on the lower left and bottom of the image, containing white text.

“Charles Darwin University is one of the largest university providers of online education for nurses, midwives, medical doctors and other health professionals.

The nursing and midwifery team at CDU is values driven. We deliver quality, innovative nursing and midwifery degrees to more than 5,500 students across Australia and engage in high impact research that makes a difference in the lives of people in the Northern Territory, Australia and internationally.”

– Professor Catherine Turner AM, Dean,
College of Nursing and Midwifery at
Charles Darwin University



Convenient and unique placements

Supervised clinical placements and simulation training are an important requirement for professional registration and to prepare you to work as a nurse or midwife.

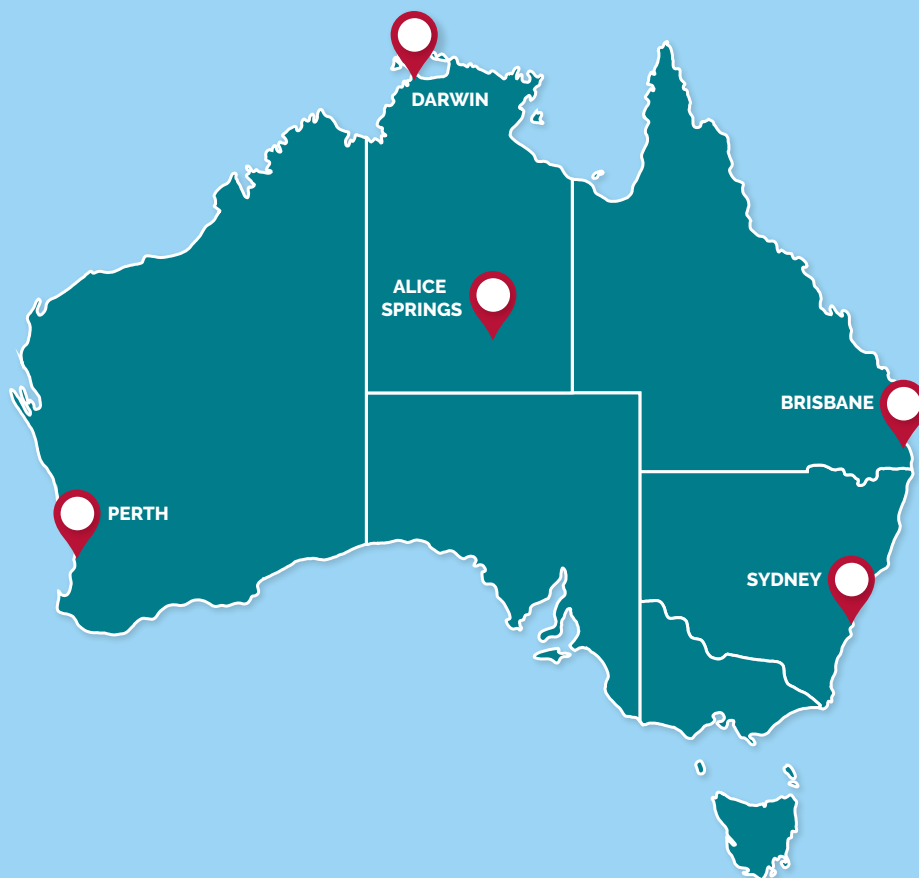
Placements close to home

A placement refers to the time you will spend learning, under supervision, in a clinical setting such as a hospital or care facility. At Charles Darwin University, we'll find you a placement close to home – wherever you are in Australia.

Clinical simulation in most major Australian cities

A clinical simulation refers to the time you spend in a simulated learning environment. At Charles Darwin University, you'll train in large-scale simulated hospital ward with up to 12 different manikins.

We have simulation suites in Sydney, Darwin, Alice Springs, Brisbane and Perth. Unlike many other universities, you can usually complete your clinical simulations as an intensive unit over one or two weeks rather than spread out over the semester.



Unique opportunities

Interested in gaining experience in rural, remote and Indigenous health? Thanks to our location in the Northern Territory and strong industry links, we can offer some of Australia's most unique clinical placement experiences.

These experiences can strengthen your cultural competence, a valuable skill in any healthcare setting. Your ability to understand diversity and communicate effectively across cultures greatly improves your nurse-patient relationships.

Bachelor of Nursing



LOCATION

Online, Casuarina (Darwin), Sydney



PLACEMENTS REQUIRED

Yes



DURATION

3 years full-time, 6 years part-time



START DATES

Semester 1, Semester 2

The Bachelor of Nursing is a professionally accredited degree that qualifies you to register as a Registered Nurse (Division 1) in Australia. It is recognised by the Nursing and Midwifery Board of Australia.

As a graduate of the Bachelor of Nursing, you will be ready to work as a safe, collaborative, articulate and ethical registered nurse. This course will prepare you to be responsive to local, national and regional healthcare needs, and be aware of emerging global healthcare trends.

Graduates are eligible to apply for registration with the Health Licensing Authority (Nursing and Midwifery Board of Australia).

Graduating from this course may lead to opportunities in public and private hospitals, and medical clinics in areas such as mental health, community health, acute and chronic care.



Visit our website for full course details



“CDU has been doing online nursing degrees for so long they’re really good at it. At CDU, everyone – online and on campus – is just a student.

“I did most of my practical training in Sydney and chose to do one in Alice Springs. It was one of the best experiences of my life.”

– Michelle, online Bachelor of Nursing graduate

Diploma Of Health Care/ Bachelor Of Nursing

**LOCATION**

Online, Casuarina (Darwin), Sydney

**PLACEMENTS REQUIRED**

Yes

**DURATION**

3 years full-time, 6 years part-time

**START DATES**

Semester 1, Semester 2

The Diploma of Health Care/Bachelor of Nursing is a combined course that will see you graduate with two qualifications in the same time it takes to complete one.

The Diploma of Health Care is integrated into the Bachelor of Nursing and will be awarded after your first year of study, which means you'll hold a qualification and can start working in the health sector while you finish your degree.

The Bachelor of Nursing will qualify you to work as a Registered Nurse (Division 1) in Australia and it is recognised by the Nursing and Midwifery Board of Australia.

Graduating from this course may lead to career opportunities in public and private health settings and speciality areas such as mental health, community health, acute and chronic care, primary health care, and emergency and trauma settings.



Visit our website for full course details

Bachelor of Midwifery



LOCATION

Online, Casuarina (Darwin)



PLACEMENTS REQUIRED

Yes



DURATION

3 years full-time, 6 years part-time



START DATES

Semester 1, Semester 2


The Bachelor of Midwifery is a recognised degree that qualifies you to register as a midwife in all Australian States and Territories and some overseas countries. It is an approved program of study by the Nursing and Midwifery Board of Australia.

As a graduate of the Bachelor of Midwifery, you will be ready to provide woman-centred, evidence-based care for women and babies throughout the childbearing journey in a variety of settings. You will help to promote the health and wellbeing of women and their families by supporting the woman's childbearing choices and providing expertise around pregnancy, birth, postnatal and the newborn period. You will also be prepared to collaborate with other health professionals to continue midwifery care in complex situations.

Graduating from this course may lead to opportunities in midwifery group practice, public and private hospitals, and international aid organisations.



Visit our website for full course details



“CDU’s Bachelor of Midwifery offered amazing flexibility. I knew that if I was going to succeed in the degree, I needed to study online, and at my own pace. Throughout my four years studying, CDU was amazingly supportive. I gave birth to two babies and had a toddler, and they helped me rearrange my placements. When I was on campus for a simulation block, they didn’t bat an eyelid when I needed to breastfeed my baby every three hours.”

– Talea, online Bachelor of Midwifery graduate

Study support wherever you are

Whether you study online or on campus, you'll be surrounded by a network of study buddies and support services to help keep you motivated, focused and on-track with your studies.



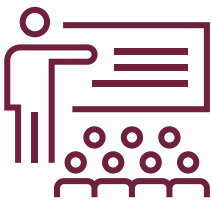
Online study buddies

Enjoy seamless, interactive collaboration with your peers, tutors and lecturers on Learnline. Jump into forums, join discussion boards and chat online with your fellow students – any time of the day or night, across Australia and beyond.



Free career advice

The Careers and Employment team offer expert advice and online tools to help you find a job, understand your work style, build your CV, practice job interviews, and more.



Free academic skills programs

Peer Assisted Study Sessions (PASS) are online and on campus group study sessions run by students, for students. Students who have successfully completed the same unit will teach you new study skills, assessment techniques and exam preparation strategies.

The Academic Language and Learning Success Program (ALLSP) is a free, confidential academic skills service to help you improve your study skills and understand what your assignments require. Get advice at drop-in sessions, personal appointments, online tutorials, or workshops.



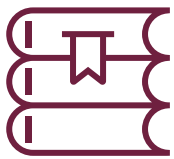
Support for Indigenous students

A dedicated Indigenous Student Services team provides multi-layered support to Aboriginal and Torres Strait Islander students all over Australia. This includes free tutoring, as well as support with travelling away from home, application processes, scholarship applications, and more.



Student Central dream team

Student Central is your one-stop spot for support and guidance. You can phone, email or visit them for advice on admissions, timetabling, enrolling, exams, course fees and payments, study plans, scholarships, and more.



Log on to the library

Online and on campus students have 24/7 access to library resources. Professional library staff are ready to help over the phone, via email, or face-to-face on most campuses.



Equal access

A dedicated Equity Services team provides free and confidential counselling, services and support for students with a disability and/or health condition. This may include providing adjustments to your study conditions, course materials in other formats, or assistive technology.



How to apply

There are two ways to apply to study at Charles Darwin University:

- via a tertiary admission centre (SATAC or UAC) or
- directly on our website.

The way you apply depends on where you live and where you've previously studied.



Visit our website for full instructions



Or contact us on 1800 061 963



Pathways to study

We offer a range of non-traditional, flexible entry requirements. For most of our undergraduate degrees, you can apply:

- on the basis of your Year 12 results, previous study and work experience
- via a Special Tertiary Admissions Test or
- by completing CDU's free 16-week Tertiary Enabling Program.



Find your pathway to study



“I’d always planned to study a nursing degree, but because I lacked the qualifications necessary to enrol in university, I didn’t think I’d be able to go. That all changed thanks to CDU’s free Tertiary Enabling Program.”

– Jubilee, Bachelor of Nursing student



CDU Virtual Open Day

**Access anytime,
anywhere on any device**

- ▶ Explore over 300 courses
- ▶ Find your pathway to university
- ▶ Discover flexible study options
- ▶ Participate in Live Information Sessions
(view program for details)

virtualopenday.cdu.edu.au



**You
make
CDU**

Contact us

T: 1800 061 963

E: student.central@cdu.edu.au

W: cdu.edu.au



[@CharlesDarwinUniversity](https://www.facebook.com/CharlesDarwinUniversity)



[@charlesdarwinuniversity](https://www.instagram.com/charlesdarwinuniversity)



[@CDUni](https://twitter.com/CDUni)



[linkedin.com/school/charles-darwin-university](https://www.linkedin.com/school/charles-darwin-university)