



Undergraduate and Postgraduate Humanitarian, Emergency and Disaster Management Course Guide



Contents

Study your way	2
Study Humanitarian, Emergency and Disaster Management at CDU	3
Undergraduate Humanitarian, Emergency and Disaster Management courses	4
Postgraduate Humanitarian, Emergency and Disaster Management courses	4
A place for you at CDU	6
How to apply	7
Be supported	8
Why Choose CDU?	9
Contact us	10

Acknowledgement of Country

Charles Darwin University acknowledges and pays respect to the Elders both past and present of all First Nations people upon whose lands CDU campuses and centres are located.



Fit learning around your lifestyle

Study your way with a leader in online learning

At CDU, you can fit your learning around your lifestyle. Choose to study online from anywhere in Australia, part-time or full-time, and complete your placements close to home.

How online study works



Whether you study online or on campus, you will have access to our online learning platform, Learnline.



Take part in interactive lectures and group discussions live, or download recordings and resources to access later.



You'll have 24/7 access to your own study-specific tutoring service and round-the-clock technical support via email.



Access your laptop, desktop or mobile device and upload assignments from anywhere.



Meet other students and have lots of opportunities to make friends.



“

"I am lucky I found something that I enjoy, that gives me purpose. It's all about how societies and economies bounce back after significant weather events or natural disasters.

The online learning works really well for me. It allows me to have access all my materials so I can study around my schedule from home, when I am travelling, or wherever."

Jaiden, Master of Emergency and Disaster Management

Study Humanitarian, Emergency and Disaster Management at CDU

Want to work in emergency management, become an aid worker or do disaster relief work? At CDU, you can learn how to approach disaster, emergency and community risks holistically from industry experts. You'll also carry out scenario training and complete placements at leading aid agencies, NGOs and government departments.

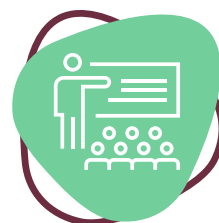
There is growing demand for skilled humanitarian, emergency and disaster management professionals in today's world. Study at CDU to learn how to help those affected by natural disasters, human-made conflicts, social injustice and poverty.



Gain hands-on experience with intensives and placements in Australia and overseas.



Choose to study online, on campus, part-time or full-time as it suits you.





Learn from academics and experienced industry professionals.


Many Humanitarian, Emergency and Disaster Management courses are being reviewed at the time of publication and may change. Find your course online for the latest admission requirements and course details:

cdu.edu.au/study/humanitarian-emergency-disaster-management

Bachelor of Humanitarian Aid and Development

 **LOCATION** – Education and Community Precinct (Darwin), Online

 **DURATION** – 3 years full-time, 6 years part-time

 **DOMESTIC INTAKE** – Semester 1, Semester 2, Summer Semester

The Bachelor of Humanitarian Aid and Development is an inter-disciplinary degree that will teach you to understand, critically analyse and apply concepts of community development, humanitarian practice and development aid. During the course, you'll explore concepts in a variety of fields including culture studies, sociology, ethics, Indigenous knowledge, community development, international humanitarian assistance and development, project management, and language studies.

You will learn from academics and industry practitioners who have a professional focus on national and international community work, disaster relief and development. You will complete a two-week intensive unit that will give you the knowledge and skills to work in humanitarian assistance. In the final year of study, students completing

the Human Services major will undertake 400 hours of community-based placements with humanitarian, human services or development aid organisations in Australia or overseas. International placements are available with industry partners, including in the Asia-Pacific Region.

With an unprecedented number of displaced people across the world seeking life-saving relief, there is a growing need for skilled and trained humanitarian and development aid workers. This degree will give you the knowledge and skills to provide support for those affected by human-made and natural disasters, poverty and social injustice.


CAREER OPPORTUNITIES


Graduates exit the program with a foundation in community work, human service delivery and international humanitarian practice. Career opportunities include working for non-government organisations (NGOs) and government agencies in the field of community development and international humanitarian assistance and development aid. The degree provides an excellent basis to pursue a higher degree in allied fields including emergency and disaster management, humanitarian and development aid as well as international relations.

PROFESSIONAL RECOGNITION

The Human Services major of this course is accredited by Community Work Australia (CWA) formerly Australian Community Workers Association (ACWA). To receive CWA professional body recognition students need to complete all 8 units in the Human Services accredited major.

Graduate Certificate of Emergency and Disaster Management

 **LOCATION** – Education and Community Precinct (Darwin), Online

 **DURATION** – 1 year part-time

 **DOMESTIC INTAKE** – Semester 1, Semester 2

Based in the capital of Australia's Northern Territory, at the centre of the Top End and Australia's gateway to Indonesia and South-East Asia, this highly unique postgraduate program focuses on a geographic region that is unarguably the most prone to and affected by various types of disasters.

The Graduate Certificate of Emergency and Disaster Management will equip you with the skills and ability to apply your knowledge and experience appropriately, collaboratively and productively in this vulnerable region and other parts of the world.

You will graduate with the essential knowledge and skills required to manage phases of the disaster management cycle and develop the confidence to apply your academic studies to practical real-world responses, contributing your professional insights into this rapidly evolving sector.

This in-depth course promotes its uniqueness in three areas:

- > Focus on the Asia-Pacific Region
- > Informed practice and research
- > Multi-sectoral approach.


Along with the necessary technical skills and experience, you will also develop your managerial and leadership skills to either assist in your current career or help with new career pathways.


This course is a pathway for advanced studies and is supported by nationally and internationally respected industry partners. The Graduate Diploma and Graduate Certificate in Emergency and Disaster Management are entry and exit pathways for the master's degree course.

CAREER OPPORTUNITIES

Graduating from a Graduate Certificate in Emergency and Disaster Management may lead to career opportunities focusing on emergency and disaster management from prevention to recovery. Your qualifications could land you a role in health, environment, social wellbeing, humanitarian assistance and management.

Graduate Certificate of Leadership (Police, Fire and Emergency Services)

 **LOCATION** – Education and Community Precinct (Darwin), Online

 **DURATION** – 1 year part-time

 **DOMESTIC INTAKE** – Semester 1, Semester 2

CDU's Graduate Certificate of Leadership (Police, Fire and Emergency Services) prepares personnel to effectively and efficiently lead in the face of small-scale routine situations to complex catastrophic events. The course explores how public leaders manage crises, the secrets of successful crisis management, and how to anticipate and mitigate the risk of future crises. Study online or on campus and design your course by selecting from a range of specialist electives to suit your role. This course can also become a pathway for further learning.

Over the single year, part-time Graduate Certificate of Leadership (Police, Fire and Emergency Services) course, you will:

- > Develop your leadership skills through advanced analysis of case studies from Australia and abroad
- > Learn about proactive measures to deal with emergency management and disaster risk reduction
- > Learn to apply your skills and knowledge effectively in real-world disaster scenarios
- > Develop collaborative skills for both local and global crisis management, underpinned by a comprehensive understanding of leadership frameworks for complex situations


- > Move beyond academic and theory-based learning to gain the practical and applied skills at local, national, regional and international levels.


CAREER OPPORTUNITIES

Most students undertaking this course are from the police, fire and emergency sector and study to acquire skills and knowledge that will further their career in the sector.

Graduate Diploma of Emergency and Disaster Management

 **LOCATION** – Casuarina, Online

 **DURATION** – 1 year full-time, 2 years part-time

 **DOMESTIC INTAKE** – Semester 1, Semester 2

Based in the capital of Australia's Northern Territory, at the centre of the Top End and Australia's gateway to Indonesia and South-East Asia, this highly unique postgraduate program focuses on a geographic region that is unarguably the most prone to and affected by various types of disasters.

The Graduate Diploma of Emergency and Disaster Management is designed to equip you with the essential skills and the demonstrable ability to apply your acquired knowledge and existing experience in a manner that is appropriate to the specific vulnerabilities of this region and other parts of the world.

You will graduate with the fundamental knowledge and skills to take a leadership role in managing all phases of the disaster management cycle, and apply your academic understanding to practical crisis responses.

This in-depth course promotes its uniqueness in three areas:

- > Focus on Asia-Pacific Region
- > Informed practice and research
- > Multi-sectoral approach.


This course is a pathway for further studies (for example, into a Master of Emergency and Disaster Management) and is supported by nationally and internationally respected industry partners. The Graduate Diploma and Graduate Certificate in Emergency and Disaster Management are entry and exit pathways for the master's degree.


CAREER OPPORTUNITIES


The Graduate Diploma of Emergency and Disaster Management complements your current professional resume, broadening your skill set and preparing you for management and leadership roles.

Graduating from this course can equip you to pursue career opportunities where you can directly contribute across all stages of emergency and disaster management. Your qualifications will make you a strong candidate for roles in organisations focused on emergency and disaster management, health, environment, humanitarian assistance, and management within these critical areas.

Master of Emergency and Disaster Management

 **LOCATION** – Education and Community Precinct (Darwin), Online

 **DURATION** – 2 years full-time, 4 years part-time

 **DOMESTIC INTAKE** – Semester 1, Semester 2, Summer Semester

The Master of Emergency and Disaster Management qualifies you with the skills and knowledge to work as an emergency and disaster management professional in a variety of contexts.

This unique and comprehensive program benefits from the knowledge and real-world experience of leading researchers and practitioners based in Australia's strategic hub connecting to Indonesia and South-East Asia – a region highly susceptible to diverse disasters. This course focuses on informed practice and research and critically examines issues through a multi-sectoral lens to explore the ways in which different professional and cultural perspectives may shape emergency and disaster management work.

During the course you will:

- > Gain the essential knowledge and skills required to lead and manage all phases of the disaster management cycle
- > Learn how to confidently apply your academic studies to practical responses
- > Learn how to apply your skills, knowledge and experience in a way that's appropriate, collaborative and productive in the Asia-Pacific Region and beyond
- > Have the opportunity to tailor your course by choosing from a broad range of specialised electives and drawing on relevant study opportunities both at CDU and elsewhere
- > Acquire the technical, managerial and leadership skills to progress your current career or take a new professional direction.

Upon graduation, you will possess the essential knowledge and skills to lead and manage all phases of the disaster management cycle, confidently applying your academic learning to real-world responses and contributing your professional insights to the academic discourse of this dynamic field.

A woman with dark curly hair and a man with short dark hair are sitting at a wooden table. The woman is wearing a black and white patterned top and is smiling while looking at the man. The man is wearing a light-colored button-down shirt and is also smiling. They appear to be in a casual setting, possibly a cafe or a meeting room, with a window and some papers visible in the background.

A place for you at CDU

Undergraduate

Entry requirements that recognise your achievements

Each university course has its own entry requirements – if you've achieved the required ATAR and meet the criteria you can apply directly into the course of your choice.

But perhaps you didn't ace Year 12, decided to start your career with a trade, parked your first degree to go travelling, or already have great professional experience in your industry.

We welcome and celebrate unique paths like these, which is why we offer a range of non-traditional, flexible entry requirements.

Postgraduate

Ready for the next step in your studies?

Postgraduate courses range from graduate certificates through to doctorates and can help you take the next step in your career. In most cases, you will need to have completed an undergraduate degree to apply for a postgraduate course. In some cases, consideration can be given to non-graduates who have relevant professional experience. For some courses, other criteria such as an interview, curriculum vitae (CV), audition or portfolio submission apply. Check the admissions requirements for your chosen course at cdu.edu.au/study

Inherent requirements

Many professions require practical, physical, cognitive, literacy, numeracy and certain personal capabilities, such as ethical behaviour, communication skills and legal reporting compliance.

Find out more at: cdu.edu.au/inherent-requirements

How to apply

1. Visit cdu.edu.au

Explore course information, entry requirements and selection processes for your preferred courses.

2. Select your preferences

Register with [SATAC](https://satac.edu.au) and select up to six preferences. Make sure you select your dream degree as your first preference and check the key dates for applications. Late applications may still go through but the application fee may be higher.

3. Apply

Follow instructions from SATAC to complete and submit your application. SATAC may contact you for further information.

4. Accept your offer and enrol

If you are successful you will receive an offer to study at CDU. This will arrive by email from SATAC. Offer rounds will be made from December, with the majority of offers being sent in January for Semester 1 intake. CDU will then email you information on how to accept and enrol.



TIP

After you've enrolled with CDU take the time to apply for available scholarships: cdu.edu.au/scholarships

Returning to study with us?

If you've previously completed a TAFE Certificate III or higher, the Tertiary Enabling Program or an undergraduate degree at CDU, you may be able to apply for your next course directly through CDU rather than via SATAC.

MyNextCourse is an easy, online portal that allows you to apply faster, avoid application fees and receive your offer sooner.

Visit mynextcourse.cdu.edu.au



Be supported

We are a university that will empower and support you. Whether you study online or on campus, you'll be connected to a network of support services to help keep you focused, motivated and on-track with your studies.

Free academic skills programs

Language and learning support is free and confidential, assisting you with skills development tailored to your specific unit. Language and learning advisors work with you to help you understand assignment requirements and improve communication and study skills for your discipline.

You will be paired with a dedicated peer advisor to help you navigate your studies. They will check in with you every other week. This ongoing support ensures that you're progressing well in your studies and academic life. Peer advisors also run collaborative sessions focusing on preparing you for assignments and exams.

Online study buddies

Enjoy seamless, interactive collaboration with your peers, tutors and lecturers on Learnline. Jump into forums, join discussion boards and chat online with your fellow students – any time of the day or night, across Australia and beyond.

Free career advice

The Careers and Employment team offers expert advice and online tools to help you find a job, understand your work style, build your CV, practice job interviews and more.

Log on to the library

Online and on-campus students have 24/7 access to library resources. Knowledgeable and friendly library staff are ready to help over the phone, via email or face-to-face on most campuses.

Staying well

CDU offers a range of resources to help improve your wellbeing including confidential counselling and wellbeing services.

Equal access

The Access and Inclusion team is on hand to provide free and confidential services and support for students with a disability and/or health conditions. This may include providing adjustments to your study conditions, course materials or assessments or the provision of supportive resources like assistive technology.

Scholarships and financial help

CDU offers scholarships to help you complete your studies. Scholarships are available across a range of categories – not just for high achievers. Get assistance with fees, budgeting and grants to help with your financial health and wellbeing.

Student Central

Student Central is your one-stop spot for support and guidance. You can phone, email or visit them on campus for advice on admissions, timetabling, enrolling, exams, course fees and payments, study plans, scholarships and more.

Respect. Now. Always.

At CDU we believe in diversity as a strength and welcome differences in culture, race, religion, gender identity, ability, and sexuality. We are proud of the diversity of the CDU community, and we are working together to create a fair, safe, and inclusive university where everyone can thrive.

CDU is a part of the Universities Australia, Respect. Now. Always. initiative. We are committed to ensuring our students and staff are safe from gender-based violence, sexual assault or harassment.



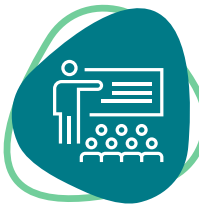
Why Choose CDU?

Join students from all across Australia who choose CDU to empower and support them to launch or progress their career.



A leading university for graduate employment outcomes¹

Graduate job-ready – with a salary to match. CDU graduates earn 5% more and are 6% more likely to land a full-time job than the average university student.²



Study your way

CDU is a specialist in flexible study. Fit learning around your lifestyle with part-time, full-time, online and on-campus options.



Top 5 Australian university for first-in-family study

We're a leading university for supporting students who are the first in their immediate family to go to university.¹



Scholarships to help you through

We have a diverse range of scholarships that recognise hard work, support those in need and assist students with the financial burden of studying.



The dual-sector advantage - we're a TAFE and a university

From certificates and apprenticeships through to diplomas and degrees, we have a course to fit your preferred level of study and pathway options. This means if you complete a TAFE course and decide to continue studying, you can do it all with CDU.

1. The Good Universities Guide 2025

2. 2023 Graduate Outcomes Survey National Report

Contact us

E: study@cdu.edu.au

Freecall: 1800 061 963

Mon – Thursday 8.00am - 4.00pm

Friday 8.00am – 3.00pm (ACST)

cdu.edu.au

Casuarina

Larrakia Country

Orange 1.1

Ellengowan Drive, NT

Education and Community Precinct

Larrakia Country

54 Cavenagh Street, Darwin NT

Darwin Waterfront

Larrakia Country

21 Kitchener Drive, Darwin NT

Palmerston

Larrakia Country

University Avenue, Palmerston NT

Alice Springs

Arrernte Country

Grevillea Drive, Alice Springs NT

Katherine Town Centre

Jawoyn, Wardaman and Dagoman Country

19 Second Street, Katherine NT

Katherine Rural

Jawoyn, Wardaman and Dagoman Country

Lot 5626 (16km North of Katherine)

Stuart Highway, Katherine NT

Nhulunbuy

Yonju Country

Lot 1468 Dartnall Close, Nhulunbuy NT

Sydney

Gadigal Country

Level 10, 815 George Street,

Haymarket, Sydney, NSW

While all reasonable efforts have been made to ensure that the information in this publication is correct, matters covered by this publication are subject to change. Charles Darwin University does not assume and hereby disclaims any express or implied liability whatsoever to any party for any loss or damage caused by errors or omissions, whether these errors or omissions result from negligence, accident or any other cause.

Published July 2025. UniPrint 83317

CRICOS Provider No. 00300K | RTO Provider No. 0373 | TEQSA Provider ID PRV12069

Student Central

Freecall: 1800 061 963

E: study@cdu.edu.au

You make CDU



cdu.edu.au