



Pathways and Enabling Programs Course Guide



Contents

Study your way	2
Study Pathway and Enabling Programs at CDU	3
Pathway and Enabling Programs	4
A place for you at CDU	7
How to apply	8
Be supported	9
Why Choose CDU?	10
Contact us	11

Acknowledgement of Country

Charles Darwin University acknowledges and pays respect to the Elders both past and present of all First Nations people upon whose lands CDU campuses and centres are located.



Fit learning around your lifestyle

Study your way with a leader in online learning

At CDU, you can fit your learning around your lifestyle. Choose to study online from anywhere in Australia, part-time or full-time, and complete your placements close to home.

How online study works



Whether you study online or on campus, you will have access to our online learning platform, Learnline.



Take part in interactive lectures and group discussions live, or download recordings and resources to access later.



You'll have 24/7 access to your own study-specific tutoring service and round-the-clock technical support via email.



Access your laptop, desktop or mobile device and upload assignments from anywhere.



Meet other students and have lots of opportunities to make friends.



“

“At the end of the day you get out what you put in, so be consistent and persistent and you will succeed... and don't give up even when you doubt yourself.”

Rikki, TEP and Bachelor of Engineering graduate

Read Rikki's story here



Study Pathways and Enabling Programs at CDU

CDU's free pathway courses, often called enabling, uniboost, preparatory, or bridging courses, can help you meet the entry requirements to a range of undergraduate degrees. They also develop the skills, knowledge and confidence you will need to succeed in your studies.

Our pathway programs are available to anyone, whether you left high school before finishing Year 12 or you're changing careers later in life and want a helping hand preparing for university study.

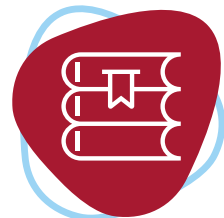
The Tertiary Enabling Program (TEP) and UniBoost programs are free for domestic students, and we also have specialised programs for First Nations students. You'll be supported with mentors and academic support and a close-knit community, either online or on campus, to help you succeed.



Meet the entry requirements for most CDU courses.





Complete a program in one semester or less.



Gain practical skills in academic understanding and report writing.

Find your course online for the latest admission requirements and course details: cdu.edu.au/study/pathway-courses. CDU also offers TAFE courses that can help you meet entry requirements and give you a head start on your studies. Find out more about CDU's TAFE courses at cdu.edu.au/TAFE

Tertiary Enabling Program

	LOCATION – Education and Community Precinct (Darwin), Sydney, Alice Springs, Online
	DURATION – 6 months full-time, 1 year part-time
	DOMESTIC INTAKE – Semester 1, Semester 2, Summer Semester

The Tertiary Enabling Program (TEP) is an alternative pathway into university, sometimes referred to as a bridging course. It's a free program that helps you build the academic skills, knowledge and confidence to study at university in as little as 16 weeks. You can choose how you study the program, completing it online or on campus, part-time or full-time, with 24/7 access to learning materials. Once you have completed TEP, you can apply for most undergraduate courses at CDU. You can go on to apply to study nursing, midwifery, education, law, psychology, engineering (additional preparatory studies in maths may be required), social work and more.

Our Tertiary Enabling Program is for you if:

- > It has been a while since you last studied and you could use a skills refresher
- > You did not achieve an adequate Australian Tertiary Admission Rank (ATAR) or equivalent
- > You have not completed other eligible qualifications that meet the minimum entry requirements for most CDU undergraduate courses.




You will study key areas including:

- > Foundations for Success
- > Fundamentals of Academic Writing and Research
- > Foundation Maths
- > Bioscience
- > Perspectives in Humanities.

Whether you study online or on campus, you'll be able to communicate with your lecturers and tutors. As a TEP student, you will also have access to the same support as all other higher education and TAFE students. This includes the knowledgeable team at Student Central, disability support services, counselling, student advocacy and more.

We welcome and celebrate your unique path to university, which is why we offer non-traditional, flexible entry requirements to help get you there.

UniBoost

	LOCATION – Online
	DURATION – 6 months part-time
	DOMESTIC INTAKE – Semester 1, Semester 2, Summer Semester

At Charles Darwin University we understand that students are accessing university through many different pathways and we aim to support students from diverse backgrounds to access and engage with chosen degrees with confidence. We know that positive change comes when our university has students with diverse backgrounds, perspectives, experiences and mindsets.

UniBoost is for you if;

- > You are about to start your course at CDU but feel uncertain about your readiness for university studies
- > You have already started studying and wish to reinforce your understanding and learning strategies between semesters
- > You are considering higher education but want to test the waters first.

This course is designed to strengthen your skills and confidence in specified areas, helping you achieve your study goals. Please note, it is not a pathway to enter into a higher education course. Applicants looking for an enabling course that will allow them to meet the entry requirements for most CDU undergraduate degrees should apply for the Tertiary Enabling Program (TEP).

UniBoost offers a diverse selection of units tailored to enhance your knowledge and skills, empowering you to achieve your academic goals—regardless of where you are on your educational journey.

UNIBOOST UNIT SELECTION GUIDE

General Academic Essentials

- > **UniReady:** This unit equips you with the necessary skills and knowledge to navigate university life successfully. You will learn effective independent learning strategies, time management, and how to utilise university resources.
- > **DigiPrep:** Gain essential digital literacy skills for your studies. You'll explore university systems and develop your ability to create academic documents and presentations using digital tools.
- > **Maths for the Mortally Terrified:** Focused on building confidence with foundational mathematical concepts, this unit offers support as you develop your academic numeracy in various contexts.
- > **Boost Your Presentations:** Enhance your presentation skills through practical activities. By the end of this unit, you'll be prepared to deliver an effective presentation to your peers.
- > **Boost your Academic Writing:** This unit offers targeted support for students seeking clear guidance in academic writing. It is perfect if you want to level-up your writing experience by reviewing the fundamentals and honing your skills and confidence through guided practice.
- > **AI for Learning:** With GenAI being rapidly integrated into everyday life, education and professional settings, developing GenAI literacy is crucial. This unit will support you in boosting your knowledge and skills to wield generative AI for learning in a Higher Education setting in an ethical and responsible way.

All units from the Tertiary Enabling Program (TEP) are also available individually through this course. These units are delivered during the 12-week semesters and are available externally and internally at several campus locations. While UniBoost does not provide an alternative entry pathway into higher education, you may receive advanced standing for completed TEP units. See the TEP website for

further information on each unit, and contact Student Central for further assistance.

STEAM Essentials

- > **Advanced Mathematics Essentials:** Use this unit to build confidence in core mathematical skills essential for your studies in engineering, IT, and applied science. You'll engage with foundational topics like algebra, trigonometry, and introductory calculus, supported by online materials and interactive activities.


Health Essentials


- > **Human Body Essentials A:** This unit covers core concepts of anatomy and physiology, along with the essential foundational knowledge of chemistry, cellular biology and tissues upon which human anatomy and physiology are built. Additionally, it delves into the study skills necessary for success in first-year anatomy and physiology.
- > **Human Body Essentials B:** Building on the foundational knowledge from Unit A, this unit explores the organ systems of the human body, their functions and how they work together to maintain life. This is supported by the essential study skills needed to effectively learn and understand human anatomy and physiology.


Education Essentials

- > **Foundations for Aspiring Educators:** This unit offers you the chance to explore the teaching profession, envision yourself as an educator, and develop valuable transferable skills that will enhance your studies in the field of education.

First Nations Introduction to University Program

 **LOCATION** – Education and Community Precinct (Darwin), Alice Springs

 **DURATION** – 6 months full-time

 **DOMESTIC INTAKE** – Semester 1, Semester 2, Summer Semester

The First Nations Introduction to University Program is the perfect first step into university for Aboriginal and/or Torres Strait Islander people aged 17 years or older who are interested in pursuing studies in Health, Teacher Education, Arts and Humanities, Business and Accounting, Engineering or STEM.

This free program, offered on campus, is designed to provide you with academic skills, confidence, and an introduction to study and the careers in your chosen stream. In this program, you'll explore both First Nations and Western ways of knowing, doing, and sharing knowledge.

The program consists of two units:

- > ZIP011 Exploring Diverse Ways of Knowing and Doing
- > ZIP012 Communicating Diversity and Perspectives at University

You can complete the program in a four-week block or spread your study over two two-week blocks.

If you live outside the main campus centre, financial support for travel and accommodation may be available.

You will be supported throughout the program by a tutor who will help you with academic support and assessments, as well as a First Nations mentor to guide you through your transition to academic life and build a sense of belonging at CDU.

Outside the classroom, you'll participate in activities designed to connect you with fellow students, university staff, and the wider professional community.

The program allows you to choose a study area that aligns with your interests and career goals.

- > **Health:** The program gives you an introduction to both clinical and non-clinical health careers. You will study two connected units; an academic skills unit and a health-specific unit that introduces the different knowledge areas of health and wellbeing, and health policy, research and management.
- > **Teacher Education:** The program gives you an introduction to different teaching careers. You will study two connected units; an academic skills unit and a teacher education-specific unit which introduces some key aspects of becoming a registered teacher, Professional Standards for teachers, First Nations-led education programs and initiatives, embedding Indigenous ways of learning in classrooms and schools, and supporting students' language development and social and emotional learning.
- > **Arts and Humanities:** The program gives you the opportunity to work out what area of the arts and humanities you might be interested in and gives an introduction to relevant career opportunities. You will study two connected units; an academic skills unit and a general arts unit that will give students a taste of topics in creative art and storytelling, political science, history and social studies.
- > **STEM:** This program gives you an introduction to environmental science or information technology careers. You will study two connected units an academic skills unit and a science and technology-specific unit which introduces the different knowledge areas of environmental management, information technology (IT), aviation – remote pilot (using drones), and applied science for Indigenous enterprises.
- > **Engineering:** The engineering program is an intensive course designed to introduce students to the experience of studying engineering at CDU. You will study two connected units: an academic skills unit and an engineering-specific unit, which will provide the opportunity to learn about the role of engineers in society and the integration of Indigenous knowledge, engineering, and science. You will be mentored by First Nations people, expert academic staff and tutors during the course. They will help you grasp some of the fundamental concepts behind engineering and discuss career prospects in this field.
- > **Business and Accounting:** This program supports you to be successful in your subsequent studies in the business and accounting fields. You will study two connected units; an academic skills unit and a business and accounting-specific unit that provides a broader understanding of the modern global business environment, ethical practices in business and accounting, budgeting, bookkeeping, and personal taxes. The program will also introduce you to the higher education environment and expectations for study. The relationships built with other business and accounting students and lecturers will also provide a supportive network from the very first day of your studies.

This program offers a pathway to your next course and a valuable foundation for your university journey. Upon completing ZIP011 and ZIP012, you have several options for your next course of study: Certificate II or III in your discipline area.

If you have completed the NTCE or a Certificate III, you may enrol directly in a diploma or degree at CDU (subject to specific entry requirements). To qualify for a diploma or degree, you can complete two more enabling units from the TEP (Tertiary Enabling Program):

- > TEP023 Foundation Maths or
- > TEP025 Bioscience or
- > TEP024 Perspectives in Humanities.

First Nations Pre-Law Program



LOCATION – Casuarina, Education and Community Precinct (Darwin)



DURATION – 6 months full-time



DOMESTIC INTAKE – Semester 1

The First Nations Pre-Law Program is a six-week intensive with three weeks of face-to-face classes. The course is an introduction for First Nations students to study law.

This free program provides basic academic skills and knowledge in legal research, writing, reasoning and advocacy, and a pathway into CDU's Bachelor of Laws. Gain the confidence, connections and an understanding of the expectations of higher education to pursue further study and a career in law.

When you start the program, you will have the opportunity to connect with a tutor who can offer academic support and help you succeed. The program also provides opportunities for connection and belonging with each other, university staff and the professional legal community.

Successful completion of the program provides candidates with a pathway into the CDU Bachelor of Laws program, with the potential to start studying law immediately after completion of the pre-law program.



Beth, Bachelor of Laws

A woman with dark curly hair and a man with short dark hair are sitting at a wooden table. The woman is wearing a black and white patterned top and is smiling while looking at the man. The man is wearing a light-colored button-down shirt and is also smiling, looking back at the woman. They appear to be in a casual meeting or study session. In the background, there are wooden-framed glass doors or windows.

A place for you at CDU

Undergraduate

Entry requirements that recognise your achievements

Each university course has its own entry requirements – if you've achieved the required ATAR and meet the criteria you can apply directly into the course of your choice.

But perhaps you didn't ace Year 12, decided to start your career with a trade, parked your first degree to go travelling, or already have great professional experience in your industry.

We welcome and celebrate unique paths like these, which is why we offer a range of non-traditional, flexible entry requirements.

Postgraduate

Ready for the next step in your studies?

Postgraduate courses range from graduate certificates through to doctorates and can help you take the next step in your career. In most cases, you will need to have completed an undergraduate degree to apply for a postgraduate course. In some cases, consideration can be given to non-graduates who have relevant professional experience. For some courses, other criteria such as an interview, curriculum vitae (CV), audition or portfolio submission apply. Check the admissions requirements for your chosen course at cdu.edu.au/study

Inherent requirements

Many professions require practical, physical, cognitive, literacy, numeracy and certain personal capabilities, such as ethical behaviour, communication skills and legal reporting compliance.

Find out more at: cdu.edu.au/inherent-requirements

How to apply

1. Visit cdu.edu.au

Explore course information, entry requirements and selection processes for your preferred courses.

2. Select your preferences

Register with [SATAC](https://satac.edu.au) and select up to six preferences. Make sure you select your dream degree as your first preference and check the key dates for applications. Late applications may still go through but the application fee may be higher.

3. Apply

Follow instructions from SATAC to complete and submit your application. SATAC may contact you for further information.

4. Accept your offer and enrol

If you are successful you will receive an offer to study at CDU. This will arrive by email from SATAC. Offer rounds will be made from December, with the majority of offers being sent in January for Semester 1 intake. CDU will then email you information on how to accept and enrol.



TIP

After you've enrolled with CDU take the time to apply for available scholarships: cdu.edu.au/scholarships

Returning to study with us?

If you've previously completed a TAFE Certificate III or higher, the Tertiary Enabling Program or an undergraduate degree at CDU, you may be able to apply for your next course directly through CDU rather than via SATAC.

MyNextCourse is an easy, online portal that allows you to apply faster, avoid application fees and receive your offer sooner.

Visit mynextcourse.cdu.edu.au



Be supported

We are a university that will empower and support you. Whether you study online or on campus, you'll be connected to a network of support services to help keep you focused, motivated and on-track with your studies.

Free academic skills programs

Language and learning support is free and confidential, assisting you with skills development tailored to your specific unit. Language and learning advisors work with you to help you understand assignment requirements and improve communication and study skills for your discipline.

You will be paired with a dedicated peer advisor to help you navigate your studies. They will check in with you every other week. This ongoing support ensures that you're progressing well in your studies and academic life. Peer advisors also run collaborative sessions focusing on preparing you for assignments and exams.

Online study buddies

Enjoy seamless, interactive collaboration with your peers, tutors and lecturers on Learnline. Jump into forums, join discussion boards and chat online with your fellow students – any time of the day or night, across Australia and beyond.

Free career advice

The Careers and Employment team offers expert advice and online tools to help you find a job, understand your work style, build your CV, practice job interviews and more.

Log on to the library

Online and on-campus students have 24/7 access to library resources. Knowledgeable and friendly library staff are ready to help over the phone, via email or face-to-face on most campuses.

Staying well

CDU offers a range of resources to help improve your wellbeing including confidential counselling and wellbeing services.

Equal access

The Access and Inclusion team is on hand to provide free and confidential services and support for students with a disability and/or health conditions. This may include providing adjustments to your study conditions, course materials or assessments or the provision of supportive resources like assistive technology.

Scholarships and financial help

CDU offers scholarships to help you complete your studies. Scholarships are available across a range of categories – not just for high achievers. Get assistance with fees, budgeting and grants to help with your financial health and wellbeing.

Student Central

Student Central is your one-stop spot for support and guidance. You can phone, email or visit them on campus for advice on admissions, timetabling, enrolling, exams, course fees and payments, study plans, scholarships and more.

Respect. Now. Always.

At CDU we believe in diversity as a strength and welcome differences in culture, race, religion, gender identity, ability, and sexuality. We are proud of the diversity of the CDU community, and we are working together to create a fair, safe, and inclusive university where everyone can thrive.

CDU is a part of the Universities Australia, Respect. Now. Always. initiative. We are committed to ensuring our students and staff are safe from gender-based violence, sexual assault or harassment.



Why Choose CDU?

Join students from all across Australia who choose CDU to empower and support them to launch or progress their career.



A leading university for graduate employment outcomes¹

Graduate job-ready – with a salary to match. CDU graduates earn 5% more and are 6% more likely to land a full-time job than the average university student.²



Study your way

CDU is a specialist in flexible study. Fit learning around your lifestyle with part-time, full-time, online and on-campus options.



Top 5 Australian university for first-in-family study

We're a leading university for supporting students who are the first in their immediate family to go to university.¹



Scholarships to help you through

We have a diverse range of scholarships that recognise hard work, support those in need and assist students with the financial burden of studying.



The dual-sector advantage - we're a TAFE and a university

From certificates and apprenticeships through to diplomas and degrees, we have a course to fit your preferred level of study and pathway options. This means if you complete a TAFE course and decide to continue studying, you can do it all with CDU.

1. The Good Universities Guide 2025

2. 2023 Graduate Outcomes Survey National Report

Contact us

E: study@cdu.edu.au

Freecall: 1800 061 963

Mon – Thursday 8.00am - 4.00pm

Friday 8.00am – 3.00pm (ACST)

cdu.edu.au

Casuarina

Larrakia Country

Orange 1.1

Ellengowan Drive, NT

Education and Community Precinct

Larrakia Country

54 Cavenagh Street, Darwin NT

Darwin Waterfront

Larrakia Country

21 Kitchener Drive, Darwin NT

Palmerston

Larrakia Country

University Avenue, Palmerston NT

Alice Springs

Arrernte Country

Grevillea Drive, Alice Springs NT

Katherine Town Centre

Jawoyn, Wardaman and Dagoman Country

19 Second Street, Katherine NT

Katherine Rural

Jawoyn, Wardaman and Dagoman Country

Lot 5626 (16km North of Katherine)

Stuart Highway, Katherine NT

Nhulunbuy

Yonju Country

Lot 1468 Dartnall Close, Nhulunbuy NT

Sydney

Gadigal Country

Level 10, 815 George Street,

Haymarket, Sydney, NSW

While all reasonable efforts have been made to ensure that the information in this publication is correct, matters covered by this publication are subject to change. Charles Darwin University does not assume and hereby disclaims any express or implied liability whatsoever to any party for any loss or damage caused by errors or omissions, whether these errors or omissions result from negligence, accident or any other cause.

Published July 2025. UniPrint 83309

CRICOS Provider No. 00300K | RTO Provider No. 0373 | TEQSA Provider ID PRV12069

Student Central

Freecall: 1800 061 963

E: study@cdu.edu.au

You make CDU



cdu.edu.au