



Undergraduate and Postgraduate Community Services and Social Work Course Guide



Contents

Study your way	2
Study Community Services and Social Work at CDU	3
Undergraduate Community Services and Social Work courses	4
Postgraduate Community Services and Social Work courses	4
A place for you at CDU	5
How to apply	6
Be supported	7
Why Choose CDU?	8
Contact us	9

Acknowledgement of Country

Charles Darwin University acknowledges and pays respect to the Elders both past and present of all First Nations people upon whose lands CDU campuses and centres are located.

Fit learning around your lifestyle

Study your way with a leader in online learning

At CDU, you can fit your learning around your lifestyle. Choose to study online from anywhere in Australia, part-time or full-time, and complete your placements close to home.

How online study works



Whether you study online or on campus, you will have access to our online learning platform, Learnline.



Take part in interactive lectures and group discussions live, or download recordings and resources to access later.



You'll have 24/7 access to your own study-specific tutoring service and round-the-clock technical support via email.



Access your laptop, desktop or mobile device and upload assignments from anywhere.



Meet other students and have lots of opportunities to make friends.



“

I am interested in working in child protection, particularly strengthening families' connections. I am also interested in mental health, counselling and working with refugees and asylum seekers.

I have really enjoyed the intensives throughout the degree. It has been a great opportunity to network and build friendships with students from all over the country.”

Genevieve, Bachelor of Social Work

Study Community Services and Social Work at CDU

Make a real difference in the lives of others through a career in social work, counselling or the human services industry.

By studying with CDU, you'll build the knowledge and experience to assess the social needs of individuals, families, groups and communities, empower people to develop skills and resources to resolve social and other problems, and further human well-being and human rights, social justice and social development.



Social justice can help improve the lives of society's most vulnerable. Understand inequalities and seek real solutions.



Become an ethical, responsive and innovative critical thinker.



Gain practical experience through placements and intensive units.






#3 university in Australia for social work starting salaries.[^]

Find your course online for the latest admission requirements and course details: cdu.edu.au/study/community-social-work

[^]The Good Universities Guide 2025

Bachelor of Social Work

-  **LOCATION** – Casuarina, Online
-  **DURATION** – 4 years full-time, 8 years part-time
-  **DOMESTIC INTAKE** – Semester 1, Semester 2, Summer Semester

The Bachelor of Social Work is a professionally recognised degree that prepares you to pursue a career as a social worker, working with people to enhance their wellbeing. As a social worker, you will use principles of social justice, human rights and cultural safety to promote social change and empowerment by providing a range of skills in counselling, case management and community development.

The course incorporates knowledge from social work, psychology, social policy, research and First Nations peoples perspectives. With the Bachelor of Social Work, you will gain the knowledge and practical skills required to work with individuals, families, groups and communities in a safe and inclusive way with those in crisis or impacted by poverty and social disadvantage.

The course includes 20 days of face-to-face classes delivered in five-day intensive blocks prior to placements. This requirement for completing

the degree meets the professional accreditation standards of the Australian Association of Social Workers (AASW).

CAREER OPPORTUNITIES

Career opportunities for graduates from this course include child protection, counselling, youth work, community development, policy, hospital and primary health, mental health, women's and men's services, housing, faith-based services, addiction services, private practice, schools, aged care, corrections, and on Country.

PROFESSIONAL RECOGNITION

Graduates of the Bachelor of Social Work are eligible for membership of the Australian Association of Social Workers (AASW).

INHERENT REQUIREMENTS




Inherent requirements apply to this course.

See cdu.edu.au/inherent-requirements for details.

PRACTICAL PLACEMENTS

In order to complete the Bachelor of Social Work, you are required to undertake professional placements, providing you with invaluable experience and the readiness for practice. You must provide proof that you have met all university and State/Territory pre-placement requirements before commencing professional placements.

Graduate Certificate of Safe Communities (Child Protection)

-  **LOCATION** – Casuarina, Online
-  **DURATION** – 1 year part-time
-  **DOMESTIC INTAKE** – Semester 1, Semester 2

If you're experienced in working with people and communities, the Graduate Certificate of Safe Communities (Child Protection) can give you an entry point to specialist postgraduate qualifications. Gain specialist knowledge and skills to assess, manage, respond to and support the reduction of child abuse.




The course is designed for people who are working, or seeking to work, in statutory child protection including social workers, psychologists, police, teachers, youth workers, allied health workers and community workers. The course aims to enhance your capacity if you're responsible for supporting vulnerable children and families within their communities.

With an emphasis on prevention, innovation and collaboration, you will be part of a learning community, drawing from research, knowledge and expertise within community-led approaches to keeping children culturally, psychologically and physically safe.

CAREER OPPORTUNITIES

Child protection staff in local government take this course for professional development and skills acquisition.

Master of Social Work (Qualifying)

-  **LOCATION** – Casuarina, Online
-  **DURATION** – 2 years full-time, 4 years part-time
-  **DOMESTIC INTAKE** – Semester 1, Semester 2

Be an agent of change and make a difference in the lives of families, individuals and communities. The Master of Social Work (Qualifying) provides you with the skills and knowledge to work in a diverse range of practice contexts including urban, regional and remote, and international settings.

As a provisionally accredited course, graduates are eligible for membership to the Australian Association of Social Workers and will be a part of a growing and diverse CDU social work alumni.

During the course, you will explore themes and concepts such as social justice, human rights, critical reflection and supervision, culturally responsive practice, research and advocacy.

Students will complete two placements in the field to further consolidate classroom learning with real world practice. Students are required to pay for attendance at intensives and placements.

PRACTICAL PLACEMENTS

In order to complete the Master of Social Work (Qualifying), you are required to undertake professional placements, providing you with invaluable experience and the readiness for practice. You must provide proof that you have met all university and State/Territory pre-placement requirements before commencing professional placements.

INHERENT REQUIREMENTS

Inherent requirements apply to this course.

See cdu.edu.au/inherent-requirements for details.

PROFESSIONAL RECOGNITION

As a graduate, you will be eligible for membership with the Australian Association of Social Workers (AASW).

A woman with dark curly hair, wearing a patterned top, is sitting at a table and smiling. A man with short dark hair, wearing a light-colored shirt, is sitting across from her, also smiling. They appear to be in a casual setting, possibly a cafe or a study area, with a window and some papers visible in the background.

A place for you at CDU

Undergraduate

Entry requirements that recognise your achievements

Each university course has its own entry requirements – if you've achieved the required ATAR and meet the criteria you can apply directly into the course of your choice.

But perhaps you didn't ace Year 12, decided to start your career with a trade, parked your first degree to go travelling, or already have great professional experience in your industry.

We welcome and celebrate unique paths like these, which is why we offer a range of non-traditional, flexible entry requirements.

Postgraduate

Ready for the next step in your studies?

Postgraduate courses range from graduate certificates through to doctorates and can help you take the next step in your career. In most cases, you will need to have completed an undergraduate degree to apply for a postgraduate course. In some cases, consideration can be given to non-graduates who have relevant professional experience. For some courses, other criteria such as an interview, curriculum vitae (CV), audition or portfolio submission apply. Check the admissions requirements for your chosen course at cdu.edu.au/study

Inherent requirements

Many professions require practical, physical, cognitive, literacy, numeracy and certain personal capabilities, such as ethical behaviour, communication skills and legal reporting compliance.

Find out more at: cdu.edu.au/inherent-requirements

How to apply

1. Visit cdu.edu.au

Explore course information, entry requirements and selection processes for your preferred courses.

2. Select your preferences

Register with [SATAC](https://satac.edu.au) and select up to six preferences. Make sure you select your dream degree as your first preference and check the key dates for applications. Late applications may still go through but the application fee may be higher.

3. Apply

Follow instructions from SATAC to complete and submit your application. SATAC may contact you for further information.

4. Accept your offer and enrol

If you are successful you will receive an offer to study at CDU. This will arrive by email from SATAC. Offer rounds will be made from December, with the majority of offers being sent in January for Semester 1 intake. CDU will then email you information on how to accept and enrol.



TIP

After you've enrolled with CDU take the time to apply for available scholarships: cdu.edu.au/scholarships

Returning to study with us?

If you've previously completed a TAFE Certificate III or higher, the Tertiary Enabling Program or an undergraduate degree at CDU, you may be able to apply for your next course directly through CDU rather than via SATAC.

MyNextCourse is an easy, online portal that allows you to apply faster, avoid application fees and receive your offer sooner.

Visit mynextcourse.cdu.edu.au



Be supported

We are a university that will empower and support you. Whether you study online or on campus, you'll be connected to a network of support services to help keep you focused, motivated and on-track with your studies.

Free academic skills programs

Language and learning support is free and confidential, assisting you with skills development tailored to your specific unit. Language and learning advisors work with you to help you understand assignment requirements and improve communication and study skills for your discipline.

You will be paired with a dedicated peer advisor to help you navigate your studies. They will check in with you every other week. This ongoing support ensures that you're progressing well in your studies and academic life. Peer advisors also run collaborative sessions focusing on preparing you for assignments and exams.

Online study buddies

Enjoy seamless, interactive collaboration with your peers, tutors and lecturers on Learnline. Jump into forums, join discussion boards and chat online with your fellow students – any time of the day or night, across Australia and beyond.

Free career advice

The Careers and Employment team offers expert advice and online tools to help you find a job, understand your work style, build your CV, practice job interviews and more.

Log on to the library

Online and on-campus students have 24/7 access to library resources. Knowledgeable and friendly library staff are ready to help over the phone, via email or face-to-face on most campuses.

Staying well

CDU offers a range of resources to help improve your wellbeing including confidential counselling and wellbeing services.

Equal access

The Access and Inclusion team is on hand to provide free and confidential services and support for students with a disability and/or health conditions. This may include providing adjustments to your study conditions, course materials or assessments or the provision of supportive resources like assistive technology.

Scholarships and financial help

CDU offers scholarships to help you complete your studies. Scholarships are available across a range of categories – not just for high achievers. Get assistance with fees, budgeting and grants to help with your financial health and wellbeing.

Student Central

Student Central is your one-stop spot for support and guidance. You can phone, email or visit them on campus for advice on admissions, timetabling, enrolling, exams, course fees and payments, study plans, scholarships and more.

Respect. Now. Always.

At CDU we believe in diversity as a strength and welcome differences in culture, race, religion, gender identity, ability, and sexuality. We are proud of the diversity of the CDU community, and we are working together to create a fair, safe, and inclusive university where everyone can thrive.

CDU is a part of the Universities Australia, Respect. Now. Always. initiative. We are committed to ensuring our students and staff are safe from gender-based violence, sexual assault or harassment.



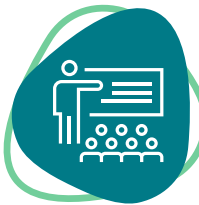
Why Choose CDU?

Join students from all across Australia who choose CDU to empower and support them to launch or progress their career.



A leading university for graduate employment outcomes¹

Graduate job-ready – with a salary to match. CDU graduates earn 5% more and are 6% more likely to land a full-time job than the average university student.²



Study your way

CDU is a specialist in flexible study. Fit learning around your lifestyle with part-time, full-time, online and on-campus options.



Top 5 Australian university for first-in-family study

We're a leading university for supporting students who are the first in their immediate family to go to university.¹



Scholarships to help you through

We have a diverse range of scholarships that recognise hard work, support those in need and assist students with the financial burden of studying.



The dual-sector advantage - we're a TAFE and a university

From certificates and apprenticeships through to diplomas and degrees, we have a course to fit your preferred level of study and pathway options. This means if you complete a TAFE course and decide to continue studying, you can do it all with CDU.

1. The Good Universities Guide 2025

2. 2023 Graduate Outcomes Survey National Report

Contact us

E: study@cdu.edu.au

Freecall: 1800 061 963

Mon – Thursday 8.00am - 4.00pm

Friday 8.00am – 3.00pm (ACST)

cdu.edu.au

Casuarina

Larrakia Country

Orange 1.1

Ellengowan Drive, NT

Education and Community Precinct

Larrakia Country

54 Cavenagh Street, Darwin NT

Darwin Waterfront

Larrakia Country

21 Kitchener Drive, Darwin NT

Palmerston

Larrakia Country

University Avenue, Palmerston NT

Alice Springs

Arrernte Country

Grevillea Drive, Alice Springs NT

Katherine Town Centre

Jawoyn, Wardaman and Dagoman Country

19 Second Street, Katherine NT

Katherine Rural

Jawoyn, Wardaman and Dagoman Country

Lot 5626 (16km North of Katherine)

Stuart Highway, Katherine NT

Nhulunbuy

Yonju Country

Lot 1468 Dartnall Close, Nhulunbuy NT

Sydney

Gadigal Country

Level 10, 815 George Street,

Haymarket, Sydney, NSW

While all reasonable efforts have been made to ensure that the information in this publication is correct, matters covered by this publication are subject to change. Charles Darwin University does not assume and hereby disclaims any express or implied liability whatsoever to any party for any loss or damage caused by errors or omissions, whether these errors or omissions result from negligence, accident or any other cause.

Published July 2025. UniPrint 83315

CRICOS Provider No. 00300K | RTO Provider No. 0373 | TEQSA Provider ID PRV12069

Student Central

Freecall: 1800 061 963

E: study@cdu.edu.au

You make CDU



cdu.edu.au