

Epson Easy Interactive Tool

Introduction

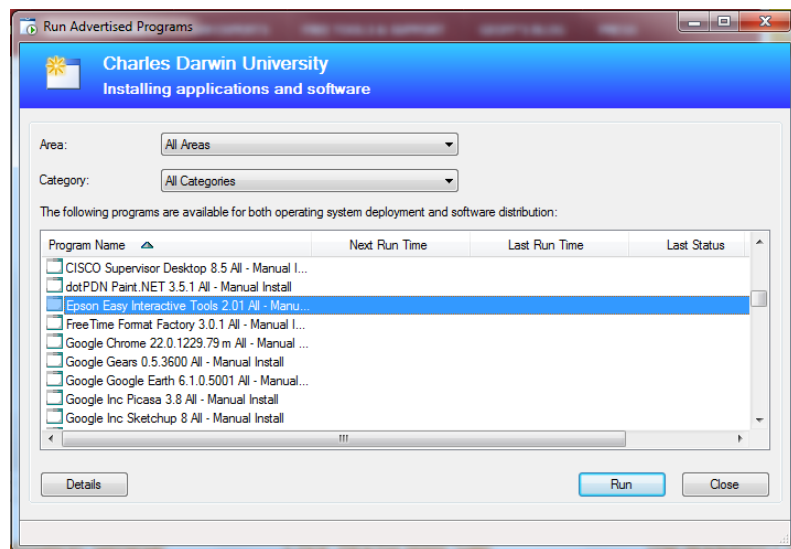
This document outlines how to install the Epson Easy Interactive Tool to a CDU owned laptop.

Select -> **Start** -> **All Programs**

Open -> **Install CDU Software**

From the list Highlight -> **Epson Easy Interactive Tool**

Select -> **Run** follow the prompts to install the software onto your computer



Choose Setup Language -> **English**

Click -> **Next**

Preparing Setup displays

Select -> **Next** -> Easy Interactive Tools Setup

Read and Select -> **I accept the terms of the license agreement**

Click -> **Next**

Easy Interactive Tools -> Select -> **Add a shortcut to the desktop**

Click -> **Install**

InstallShield Wizard Complete -> Select -> **Finish**

To Open -> Double Click -> **Easy Epson** shortcut from the desktop



For assistance, please contact ITMS Technical Support

Phone: 8946 6291 or Ext: 6291