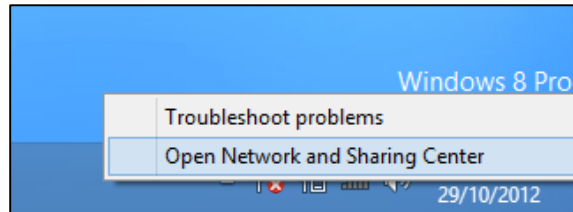
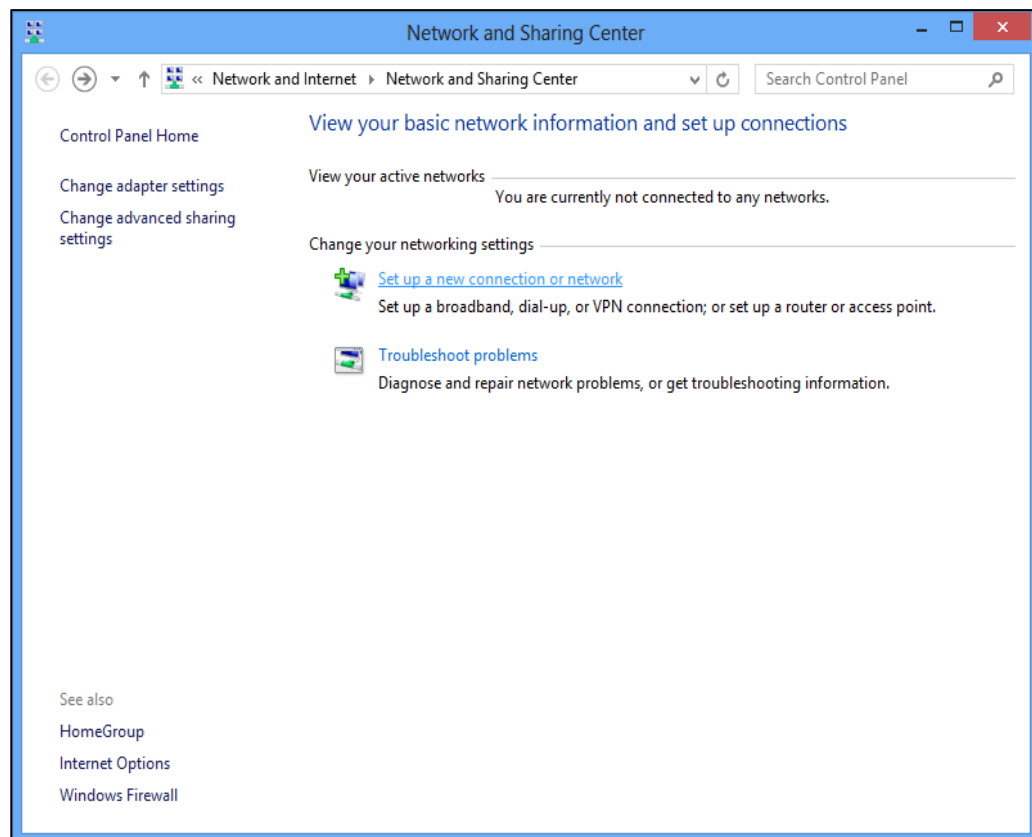


Windows 8 / 10 – Connecting to Wi-Fi (Manual Setup - Staff)

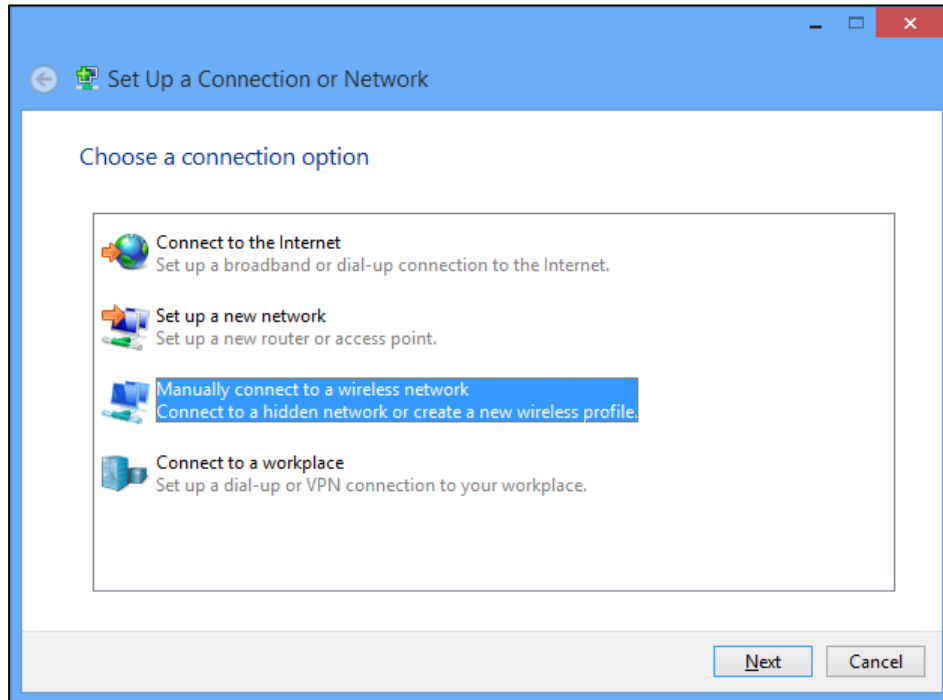
1. Right click the network preferences icon in the system tray and select **“Open Network and Sharing Center”**



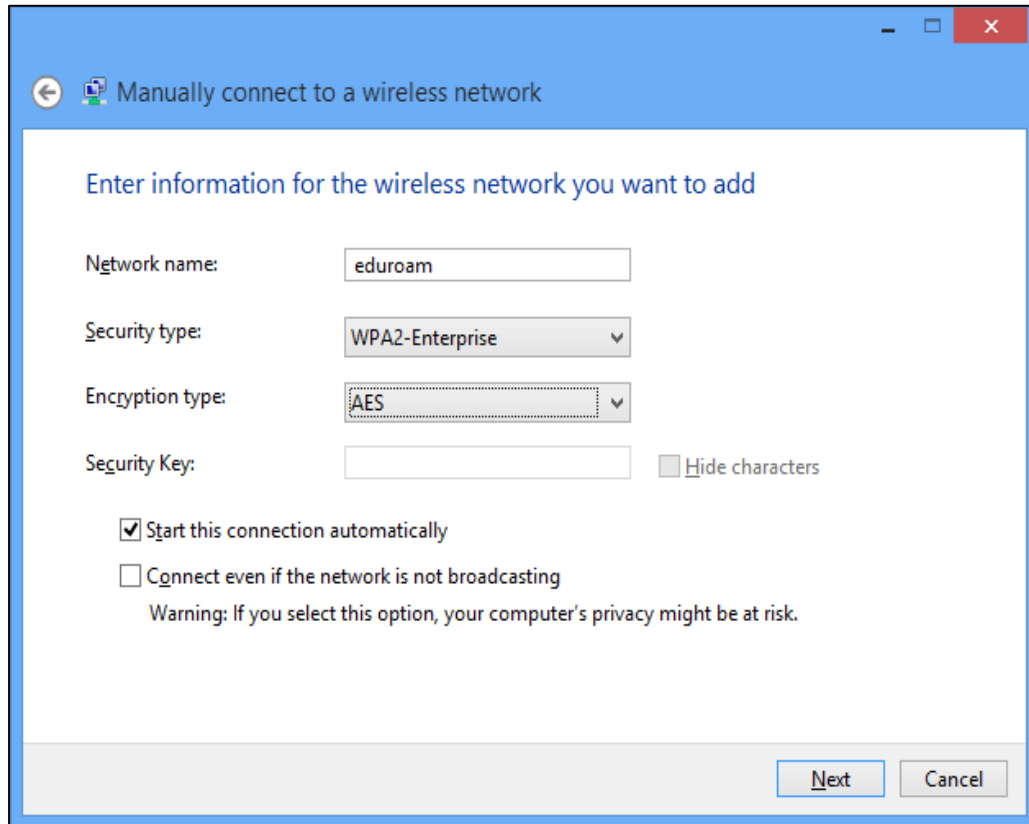
2. Select the option to **“Set up a new connection or network”**



- From the list, select the option to ***“Manually connect to a wireless network”***

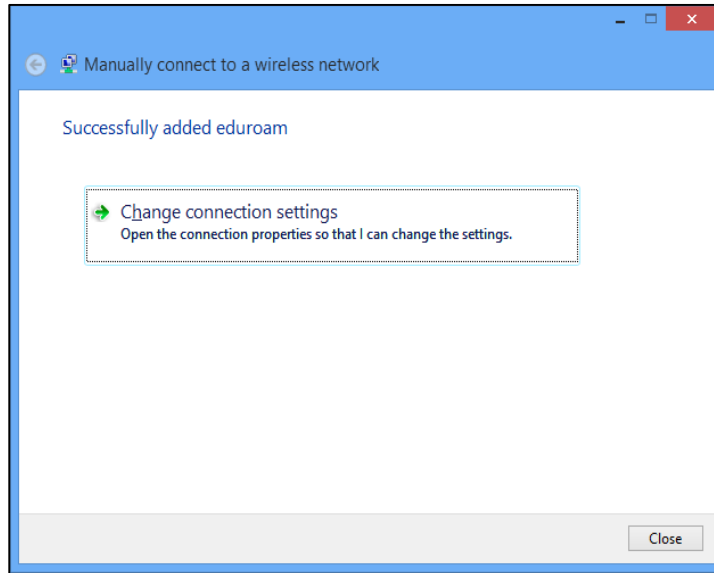


- Fill in the details as per the screenshot below and press ***“next”***

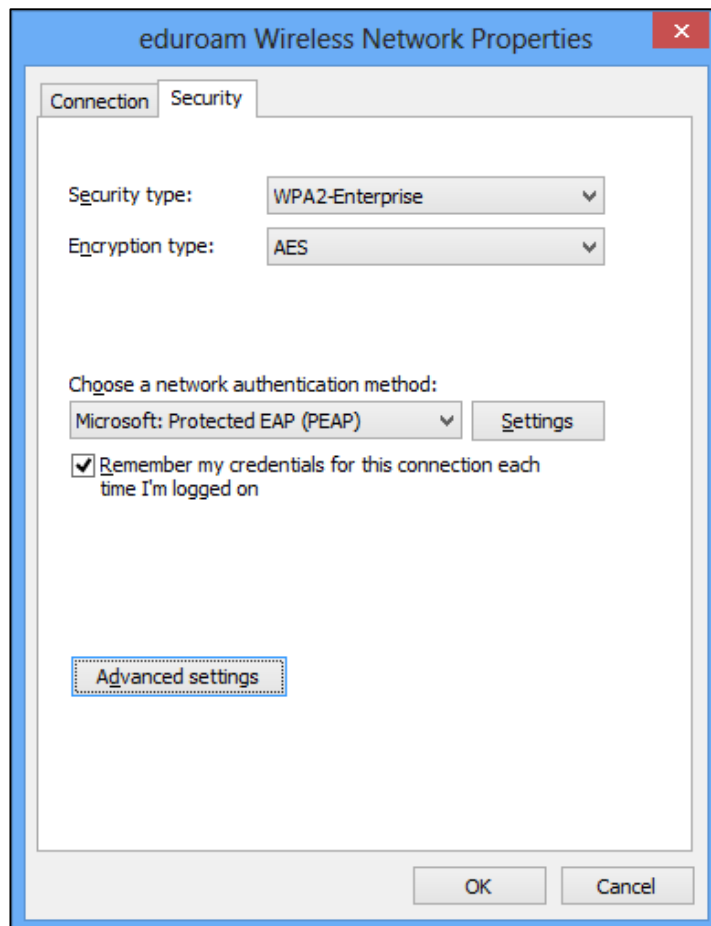


Connecting to Eduroam

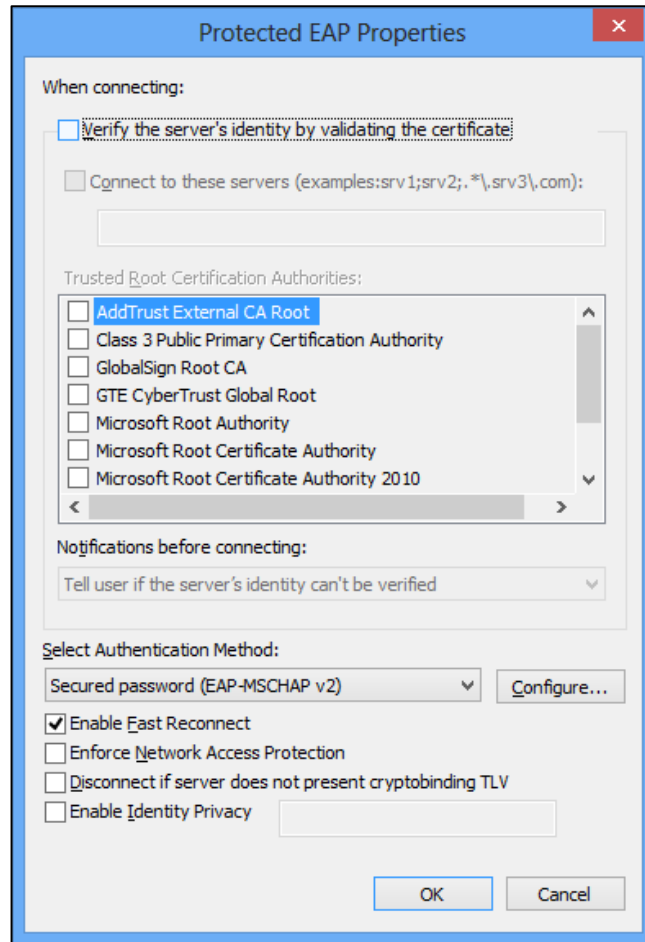
5. Click “*Change connection settings*”



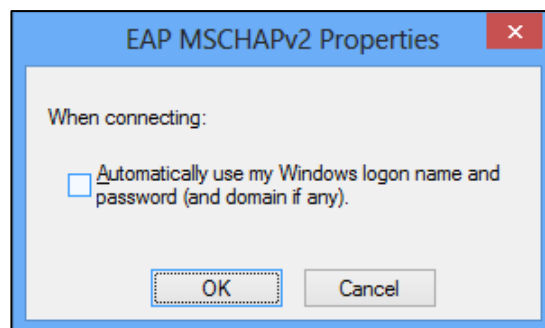
6. Change the network authentication type to “*Microsoft: Protected EAP (PEAP)*” and then click “*Settings*”



7. **Untick** the option at the top titled “*Verify the server’s identity by validating the certificate*” and then click “**Configure**” next to the “*Select Authentication Method*” field.



8. Ensure to **untick** the checkbox here as we don't want to use the client's login credentials for the connection.



9. Continue clicking “**OK**” to close all of the dialogue boxes and when prompted to enter your username and password, use the following credentials.

Username: *username@cdu.edu.au* (replace **username** with your login username)

Password: *your current CDU password*