

Wireless Presenter

Downloading Wireless Presenter Software (only required the first time)

Ensure connection to the CDU wireless network or connect via the Ethernet cable to a LAN socket on the wall.

Internal CDU Staff and Lecturers

1. Start -> **All Programs** -> **Software Centre**
2. Select -> **Find additional applications from the Application Catalog**
3. Search -> **Wireless Presenter**
4. Highlight -> **Wireless Presenter**
5. Select -> **Install**
6. Setup Select -> **Next**
7. Once completed, a WiD icon will appear on the desktop similar to this:



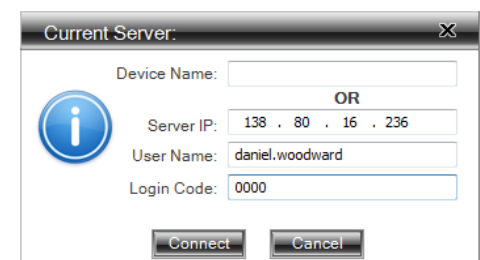
External Presenters

1. Open an internet browser.
2. Type in the IP address listed on the whiteboard (bottom left hand corner).
3. Click on the **Download Software** icon and follow the setup instructions.
4. Once completed, a WiD icon will appear on the desktop similar to this:



Connecting to the Wireless Presenter

1. Press the **WIRELESS** button on the touch panel.
2. Double click the **WiD** icon on the desktop.
3. From the 'Connect to Receiver Device' window, press the **Manual** icon.
4. When prompted, enter the '**Server IP**' in the 'Current Server' window.
5. Enter the '**Login Code**' displayed on the projection screen.
6. Press the **Connect** icon. Content should be displaying from the projector.
7. Use the **VOL** buttons to adjust the volume level.
8. Once you have completed your presentation shutdown the laptop.



**For assistance, please contact Teaching Space Support, ITMS
8946 6291 or Ext: 6291**