

Windows 10: Edge & Launcher

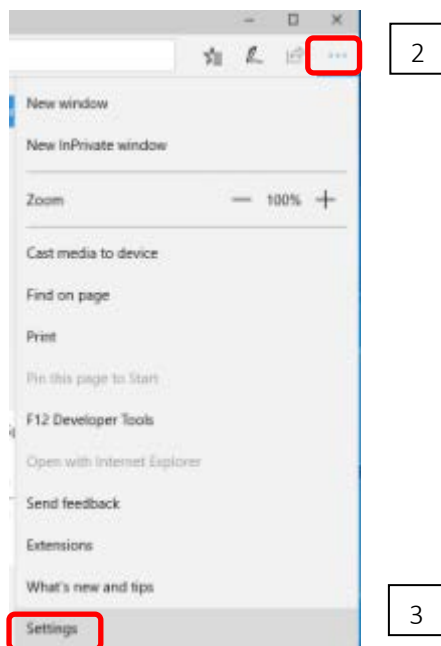
Callista Log in instructions



Edge is the default web browser for Windows 10

Checking the Edge version

Step 1: Open the Edge web browser



Step 2: Click '...'

Step 3: Settings

Step 4: View Edge version – Version 40+ above

Settings



Show the favorites bar

Off

Clear browsing data

Choose what to clear

Account

[Account settings](#)

Sync your favorites and reading list

On

Some Windows features are only available if you are using a Microsoft account or work account.

[Device sync settings](#)

Advanced settings

View advanced settings

About this app

Microsoft Edge 40.15063.0.0
Microsoft EdgeHTML 15.15063
© 2017 Microsoft

NB: If this shows a version below 40, suggestion is to use another browser.

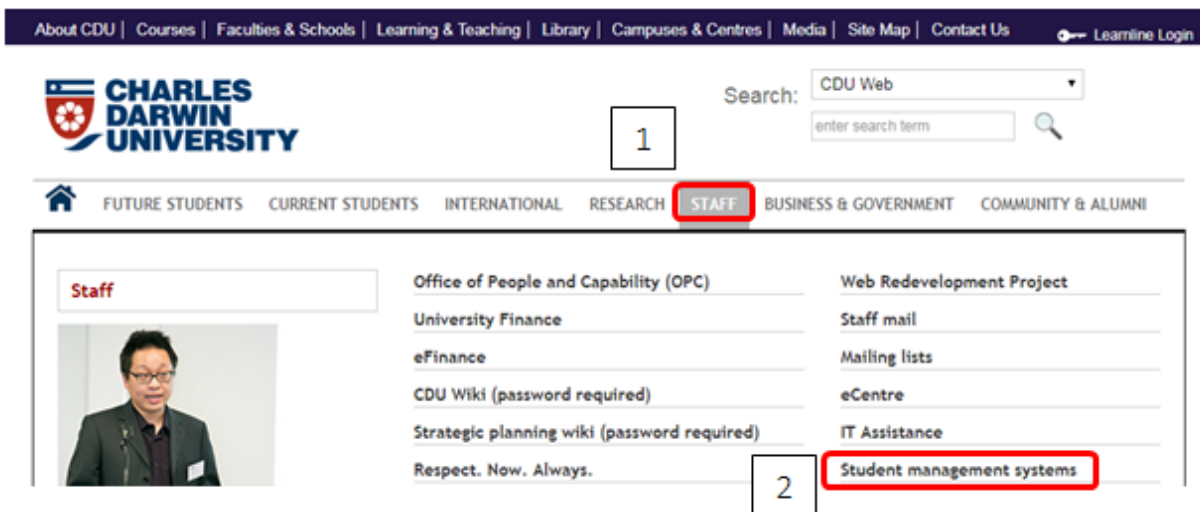
Opening the Java Web Start Launcher for the first time

Step 1: Log onto Cisco AnyConnect.  Cisco AnyConnect Secure Mobility Client

ITMS instructions can be found on this link <http://www.cdu.edu.au/itms/webvpn>

Step 2: Open Edge browser

Step 3: In the browser field type www.cdu.edu.au



Step 4: Hover over 'Staff' tab

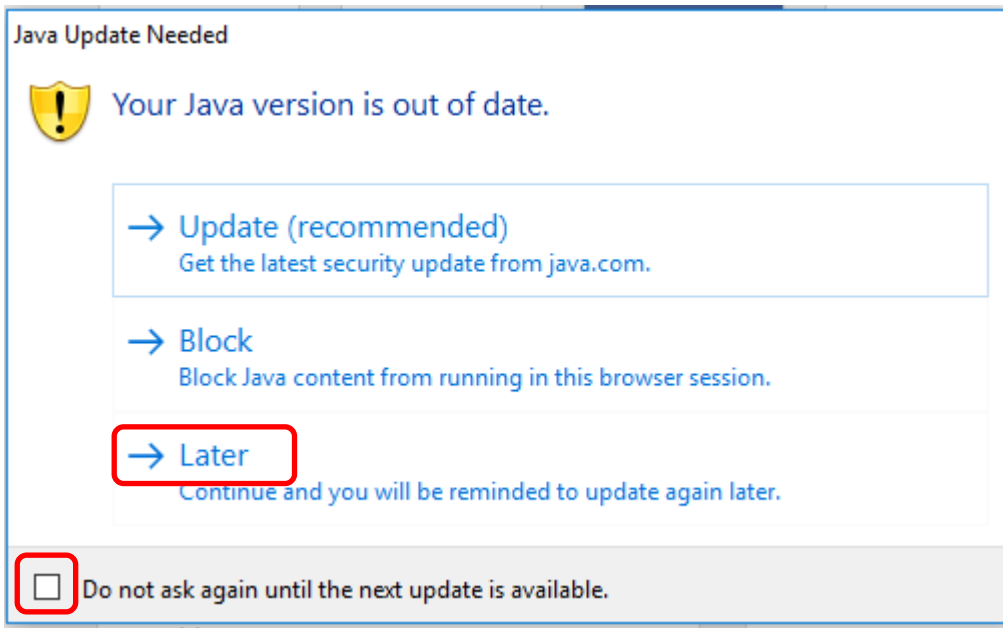
Step 5: Click 'Student Management Systems'

Callista login

Step 6: Click 'Callista login'

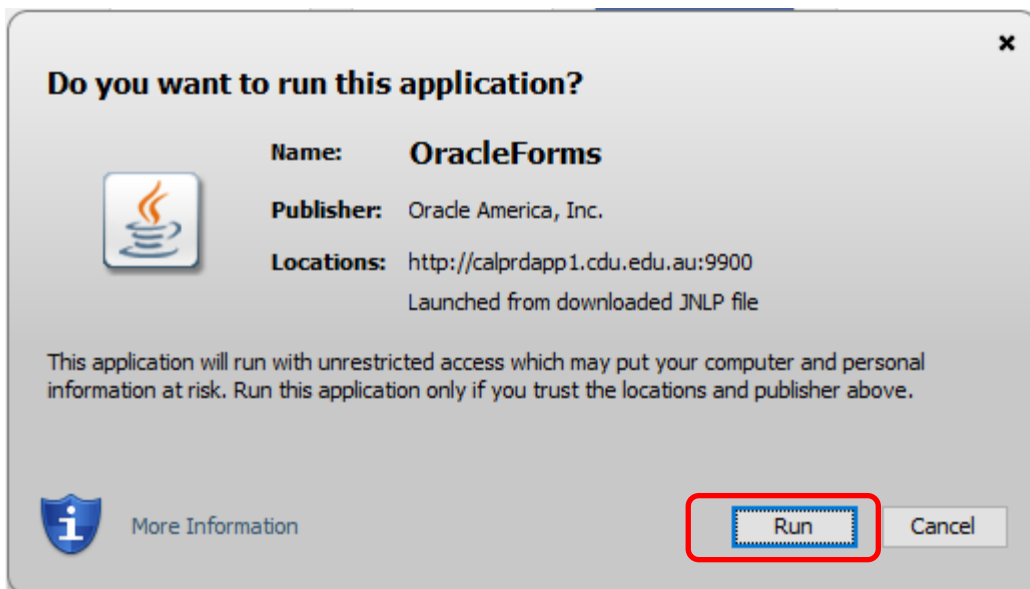


Step 7: Click 'Open'

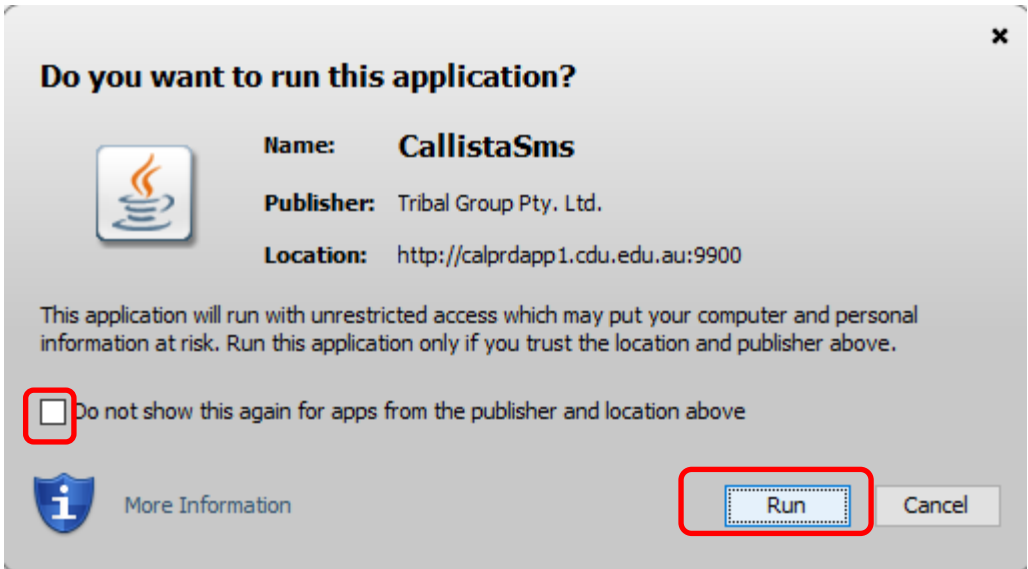


Step 8: Tick box

Step 9: Click 'Later'



Step 10: Click 'Run'



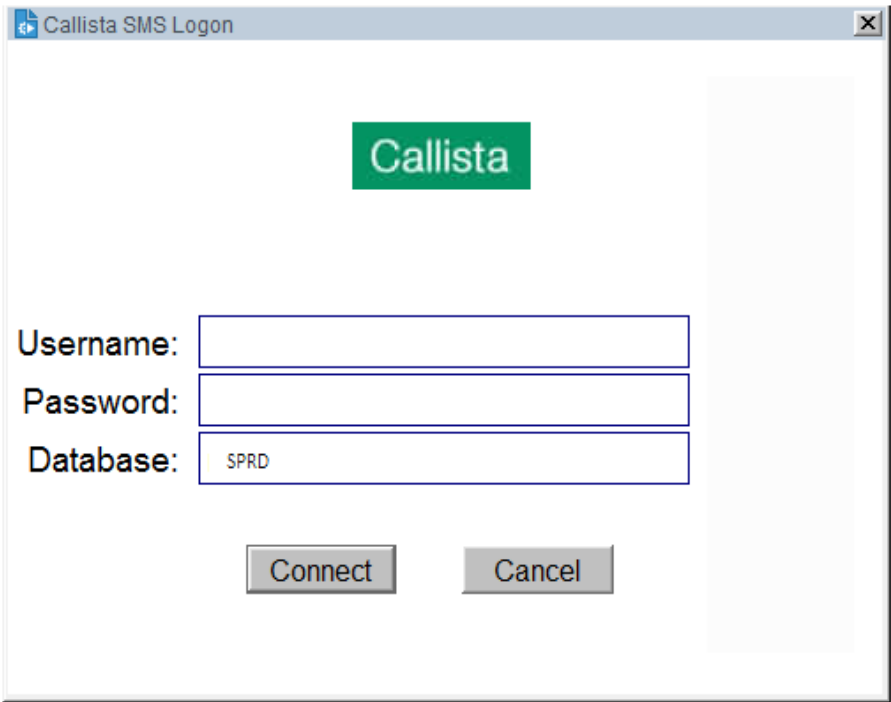
Step 11: Tick box

Step 12: Click 'Run'


Log on screen appears

Step 13: Enter your Callista Username and password

Step 14: Click 'Connect'



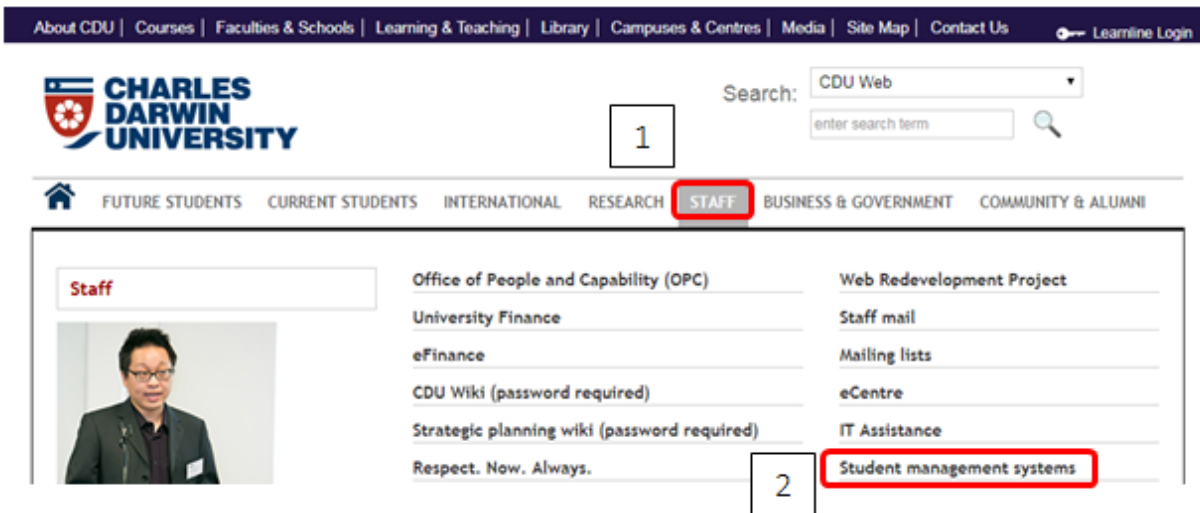
Opening the Launcher in Edge subsequent times

Step 1: Log onto Cisco AnyConnect.  Cisco AnyConnect Secure Mobility Client

ITMS instructions can be found on this link <http://www.cdu.edu.au/itms/vpn>

Step 2: Open Edge browser

Step 3: In the browser field type www.cdu.edu.au



Step 4: Hover over 'Staff' tab

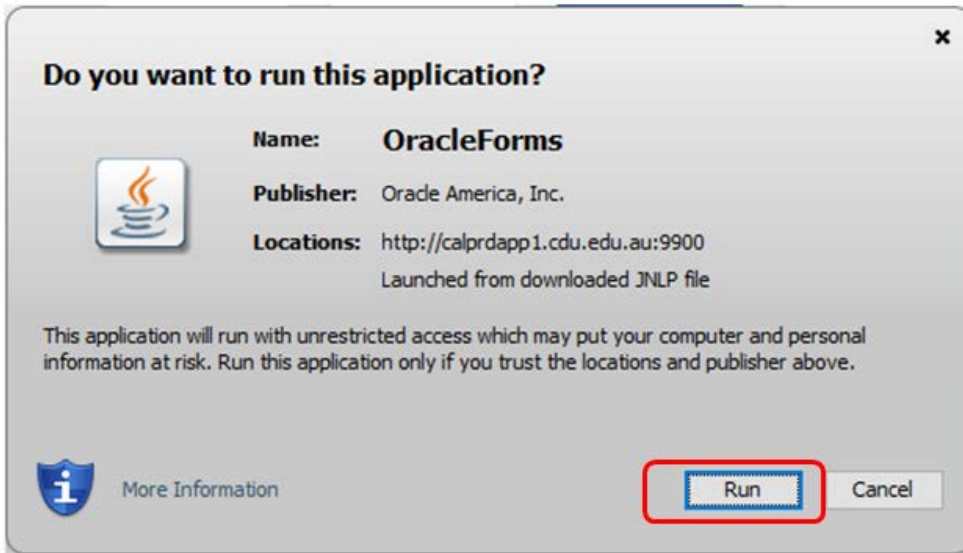
Step 5: Click 'Student Management Systems'



Step 6: Click 'Callista login'

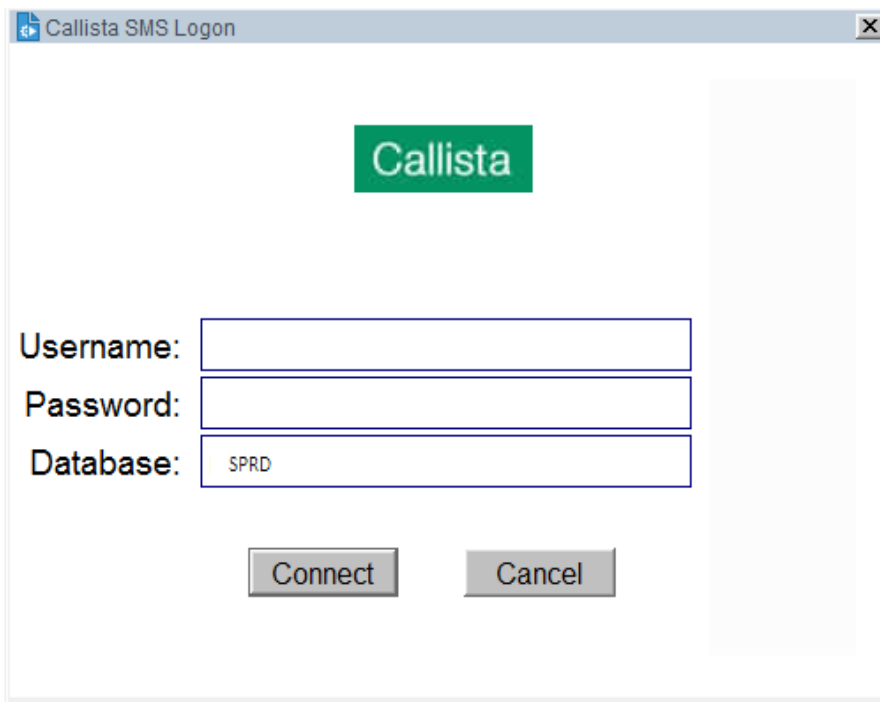


Step 7: Click 'Open'



Step 8: 'Run'

Log on screen appears



Step 9: Enter your Callista Username and password

Step 10: Click 'Connect'

Java icon appears on task bar 