

# **Impact Of Women Empowerment On Attitudes Towards Intimate Partner Violence**

Mehwish Ghulam Ali, RMIT\*

Anil Saleem, IBA

Siddiqa AliBhai, IBA

\*ali.mehwish@rmit.edu.au

# Research question

- What is the impact of women empowerment on attitudes of women towards spousal violence.
  - How is empowerment measured?

# Motivation

- To help policy makers devise a comprehensive plan to tackle violence against women
  - Status of Women In Pakistan
  - Punjab Protection of Women Against Violence Act 2015
  - Will women report the abuse?
  - Does empowerment of women change their attitude toward violence?
    - What does it mean to be empowered?

# Literature Review

- One out of every three women face has faced intimate violence at some instant in her life.
  - World Health Organization. 1997
- Negative Impact of IPV
  - (Do and Kurimoto. 2012). (Heaton and Forste. 2006). (Ackerson et al. 2008) (Malik and Rizwi. 2009).
- Factors which increase risk of IPV
  - Khan, Hafiz Muhammad Ather et al. 2013
- Women empowerment index
  - Tuladhar Set al 2013.

# Data and methodology

Beating justified if wife goes out without telling husband

Beating justified if wife neglects the children

Beating justified if wife argues with the husband

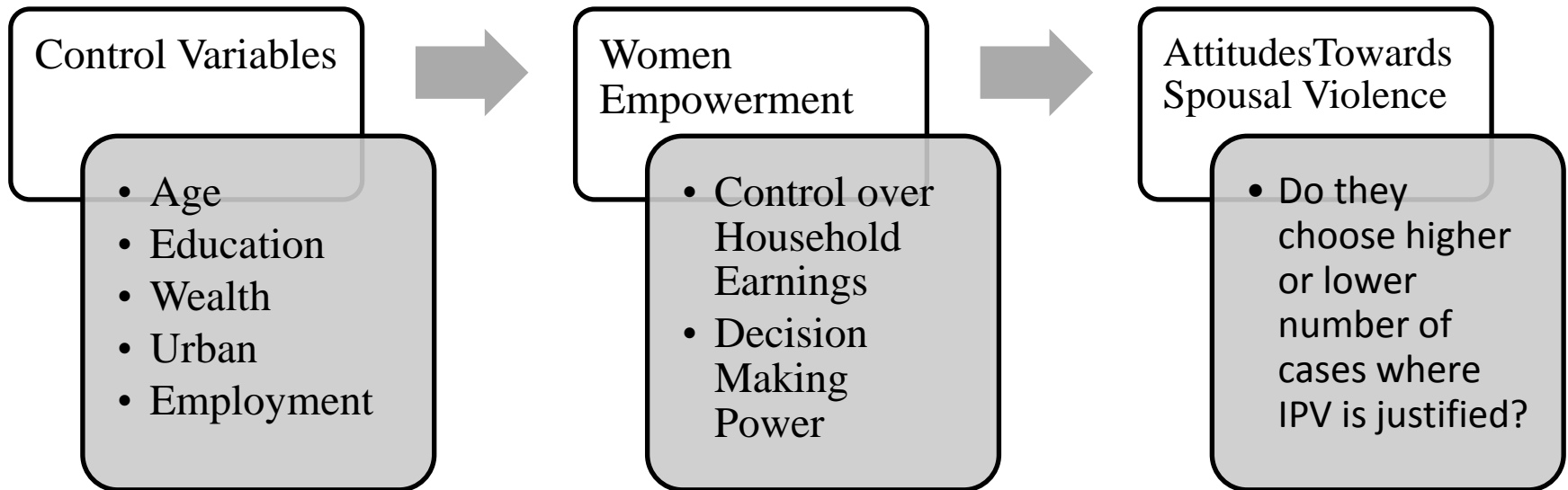
## Is wife beating justified?

Beating justified if wife refuses to have sex with the husband

Beating justified if wife burns the food

# Data and methodology

## Conceptual Framework



# Data and methodology

## Women Empowerment Index

**Scorecard for Women Empowerment Index**

Score	Decision Index	Household Income Index		<b><i>Women Empowerment Index</i></b>
		Wife's Income	Husband's Income	
2	Woman Participates in All Three Decisions	Wife Primarily Decides	Wife Primarily Decides	<b><i>Decision Index + Household Income Index</i></b>
1	Woman Participates in Atleast One Decision	Wife Jointly Decides	Wife Jointly Decides	
0	Woman Does not participate	Wife does not decide	Wife does not decide	

# Data and methodology

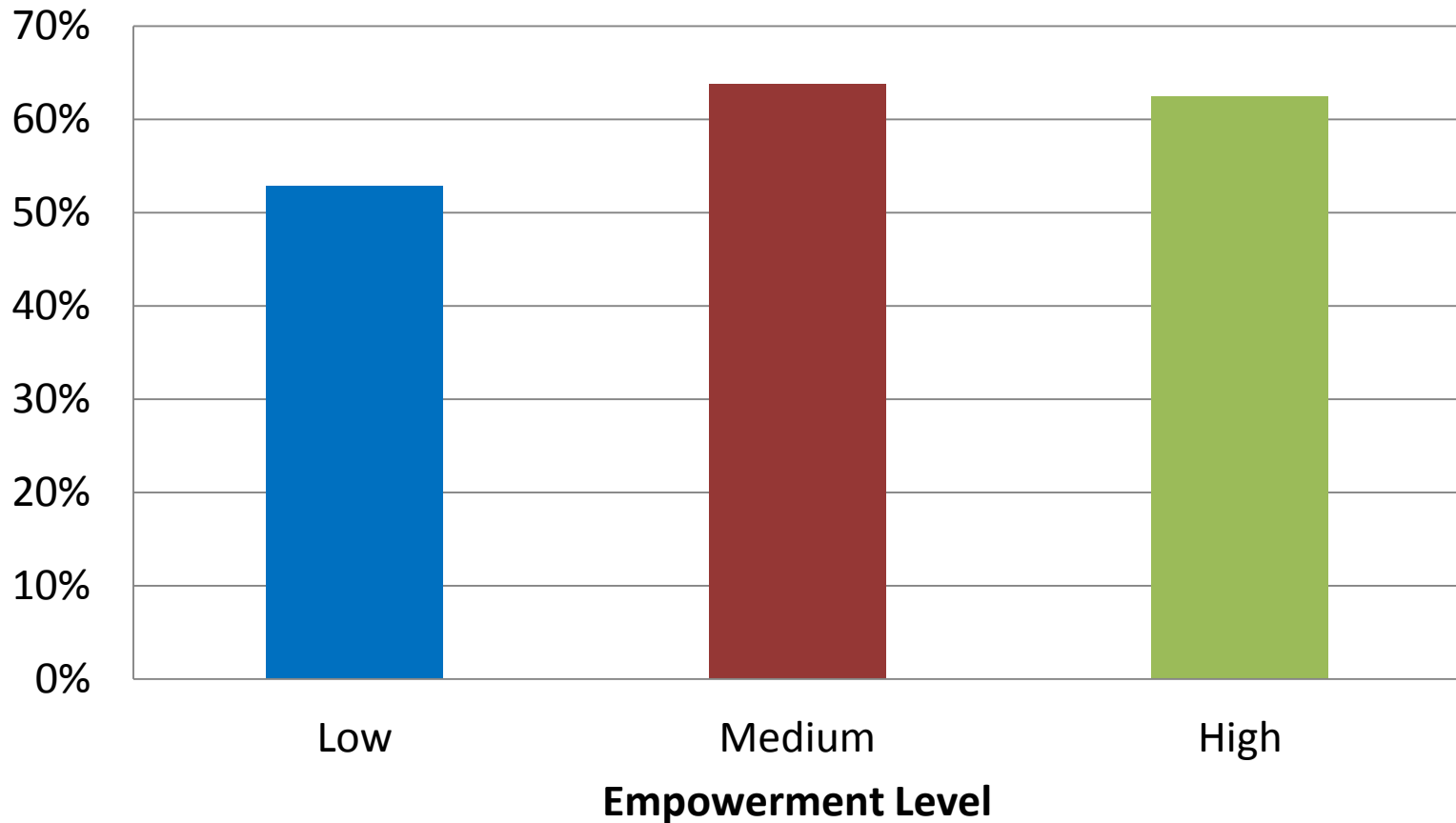
## Women Empowerment Score and Women Empowerment Index

Women Empowerment Score	Women Empowerment Index	Number of Observations	Percent
0 or 1	low	1,937	52.54
2 or 3	medium	1,455	39.46
4, 5 or 6	high	295	8
	Total	3,687	100



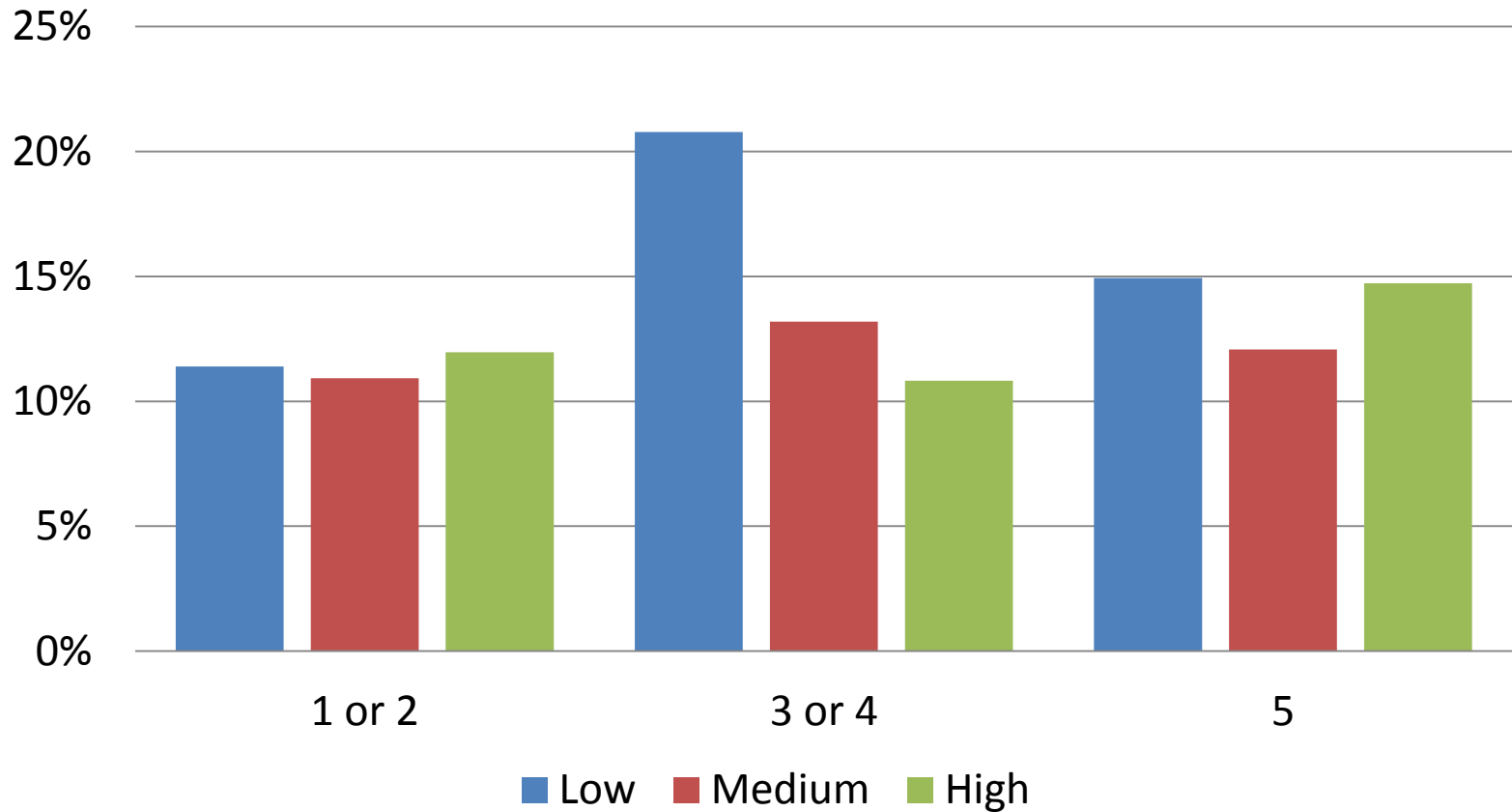
# Descriptive analysis

## Women Who Feel Wife Beating Is Never Justified By Level of Empowerment Source PDHS 2012-2013



# Descriptive analysis

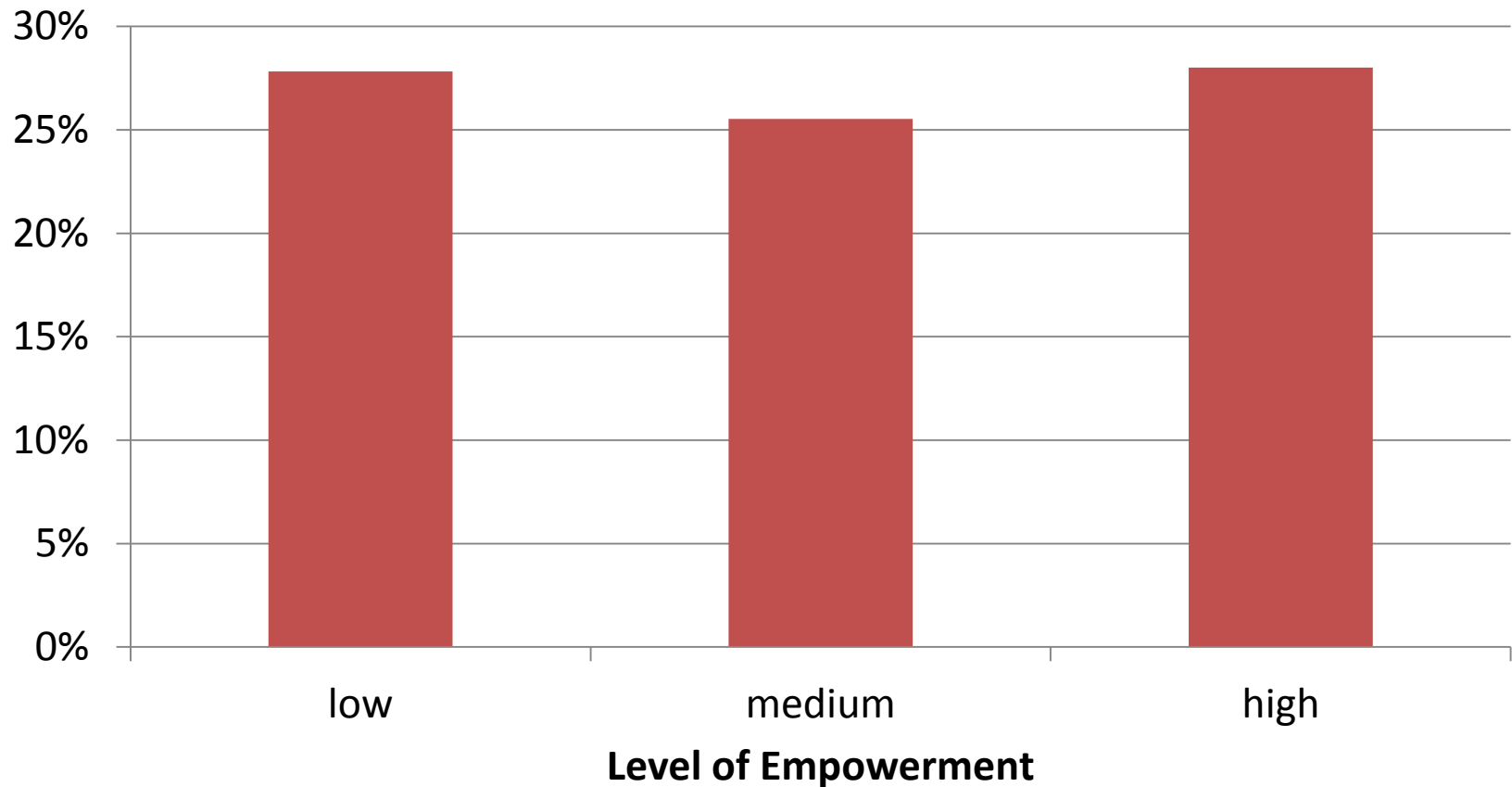
## Attitudes Towards Spousal Violence and Level of Empowerment Source PDHS 2012-2013



# Descriptive analysis

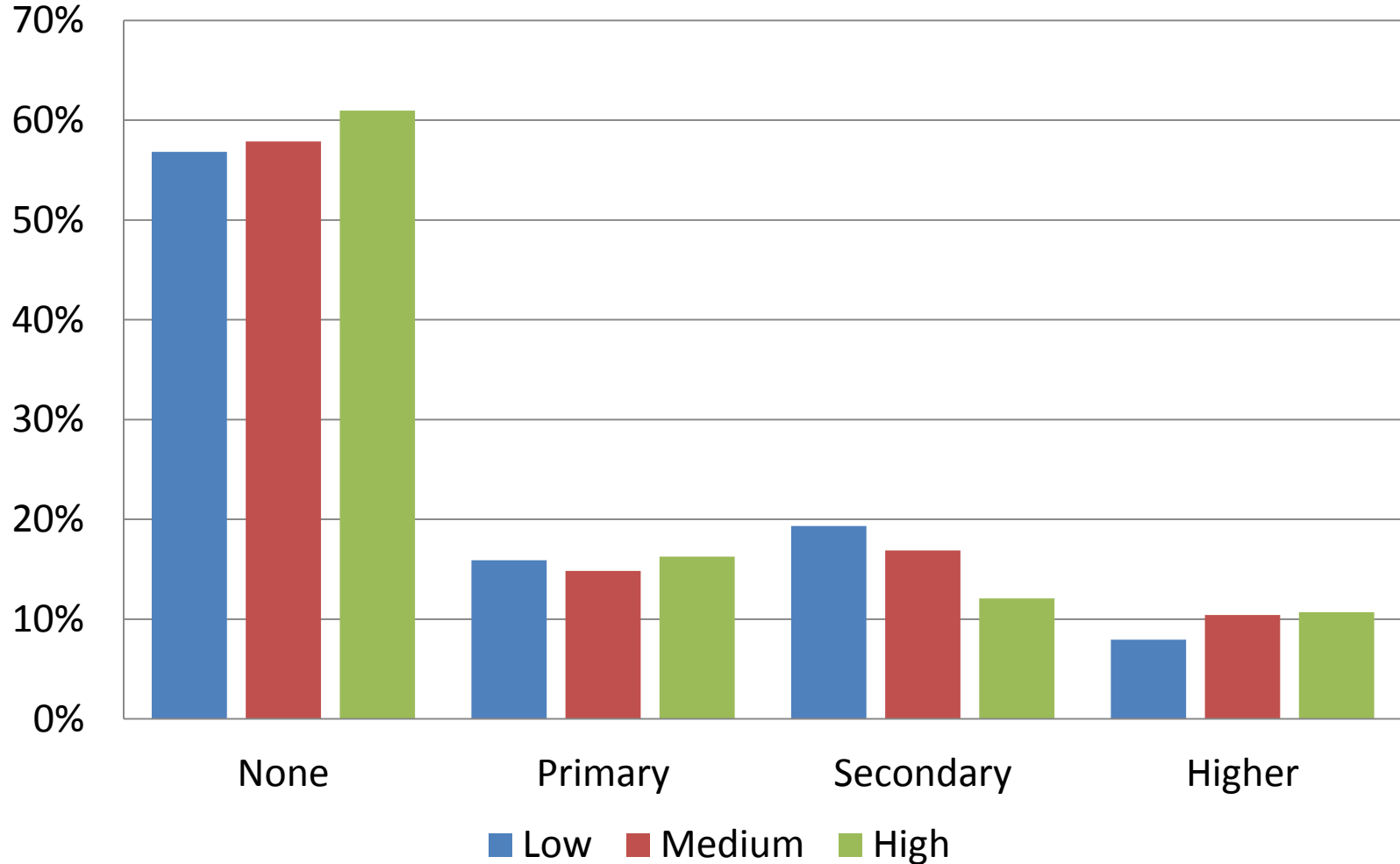
## Incidence of Physical Violence By Level of Empowerment

Source: PDHS 2012-2013



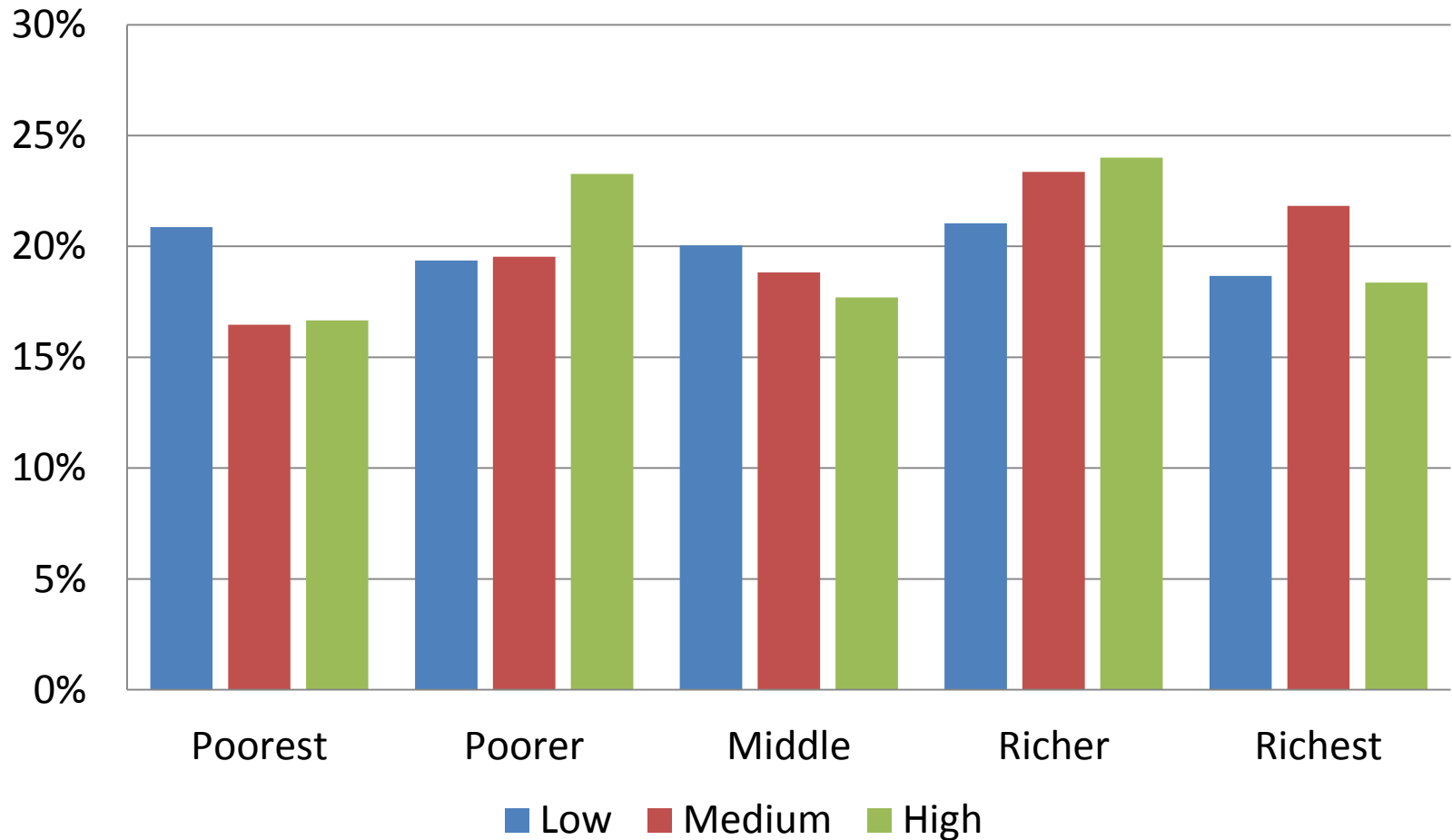
# Descriptive analysis

## Level of Education By Empowerment Level Source PDHS 2012-2013



# Descriptive analysis

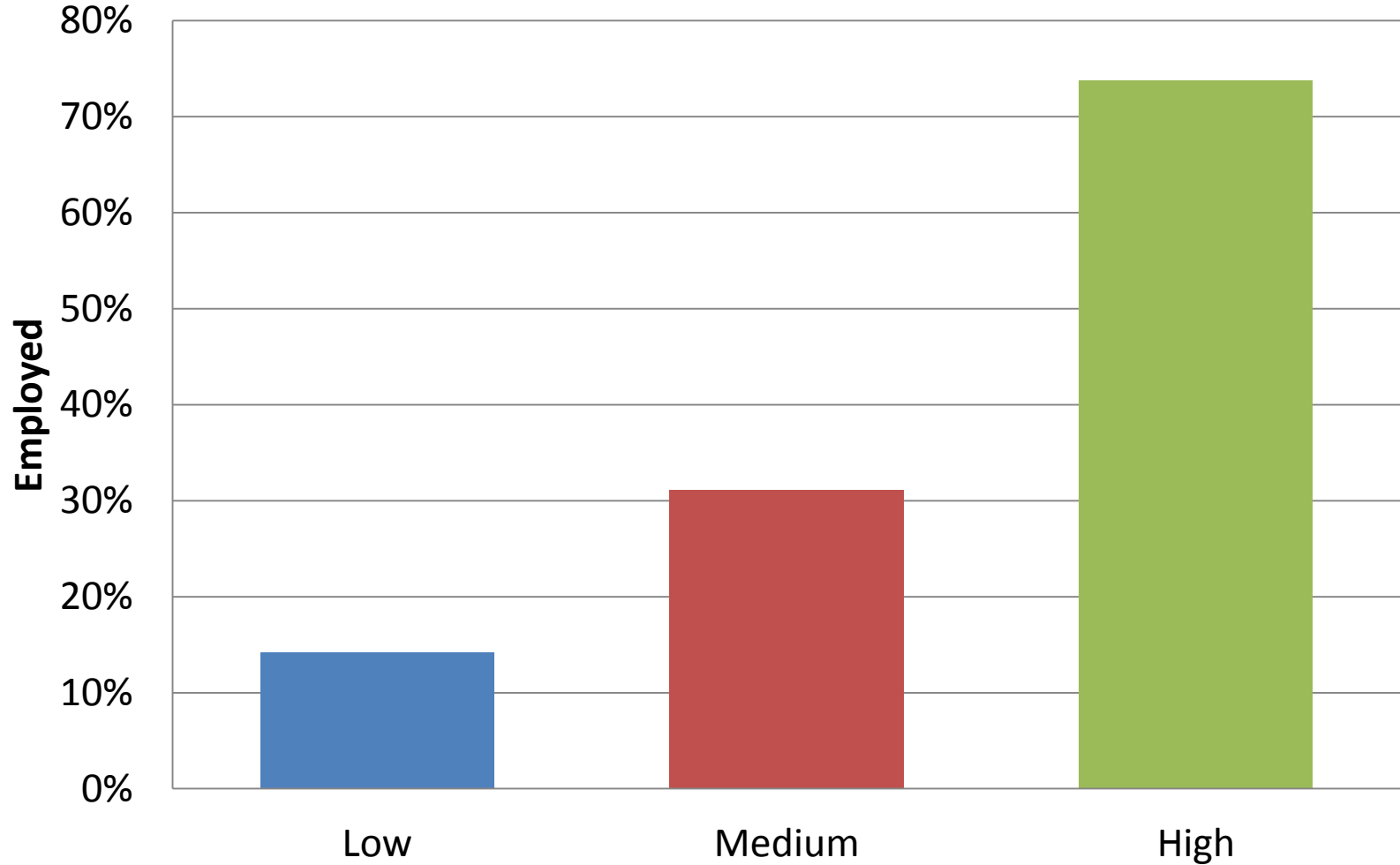
## Wealth By Empowerment Level Source PDHS 2012-2013



# Descriptive analysis

## Employment Status By Empowerment Level

Source PDHS 2012-2013



# Results

- Ordinal Logit, MLE Ordinal Logit and Generalised Logit(Constrained, Unconstrained and Partial Proportional Odds)
- Ordinal Logit and MLE both give similar and expected results
  - WEI, Education and Urban status have a negative relation to attitudes towards spousal violence
  - IPV has a positive relation to attitudes towards spousal violence
  - Age group and employment have no effect
  - Proportional Odds Assumption is violated
- Generalised Ordinal Logit
  - The constrained model does not give us any interesting results
  - The unconstrained model and proportional odds model give similar results as Ordinal Logit
  - The models are good at explaining the extensive decision i.e. if women feel spousal violence is justified or not good at explaining extent of justification
    - Sign of WEI on Attitude towards domestic violence remains consistent but affect dies down at higher levels of dependent variable

# Results

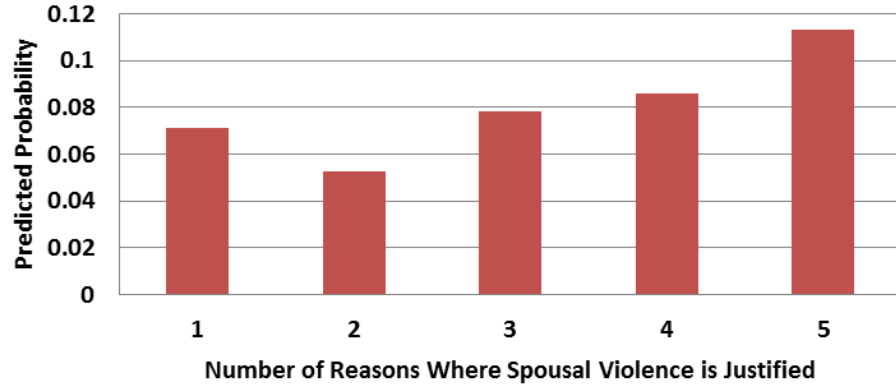
**Table 2: Predicted Probability of respondents choosing N number of reasons where they feel spousal violence is justified**

<b>N</b>	<b>Mean</b>	<b>Dev.</b>	<b>Min</b>	<b>Max</b>
<b>0</b>	0.620	0.159	0.315	0.922
<b>1 or 2</b>	0.104	0.030	0.035	0.190
<b>3 or 4</b>	0.152	0.072	0.020	0.287
<b>5</b>	0.124	0.084	0.014	0.346

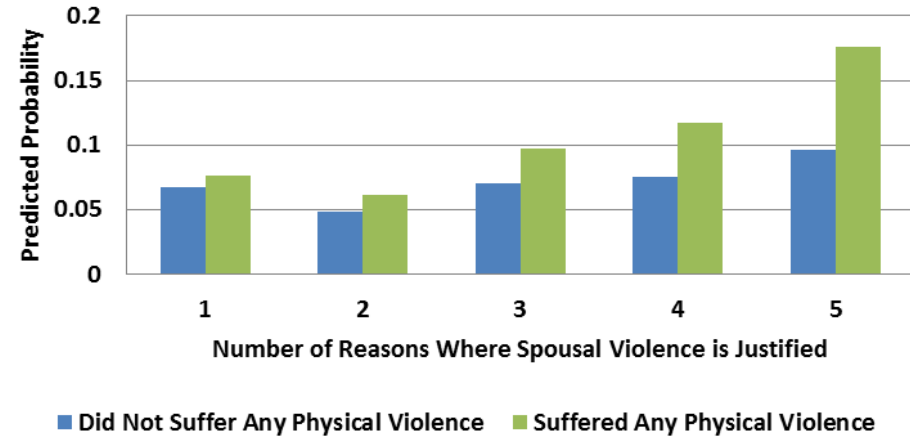


# Results

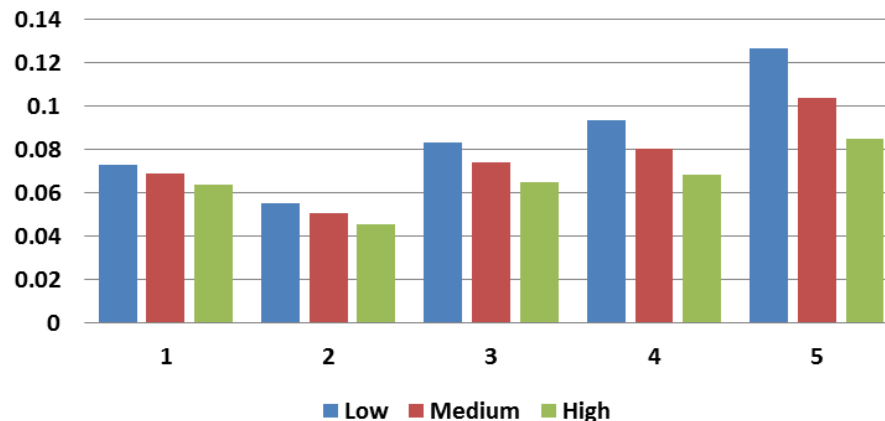
**Figure 1: Predicted Probability That Participant Chooses N Number of Reasons Where Spousal Violence is Justified**



**Figure 2: Predicted Probability By Incidence of Spousal Violence**



**Figure 3: Predicted Probability By Incidence of Women Empowerment**



# Conclusion

- Spousal violence is spread across socio economic levels, and cannot be sufficiently explained by traditional approaches which focus on education, wealth and labour force participation.
- We create a women empowerment index, which focuses on defining women empowerment based as the ability to independently make decisions.
- We then looked at the impact of women empowerment on attitudes towards spousal violence.
- Our analysis provides some interesting results,
  - Women empowerment has a negative and significant impact on tolerance for spousal violence, but this effect is more at the extensive rather than intensive margin.