



After Marina Strocchi



NORTHERN INSTITUTE
People. Policy. Place.

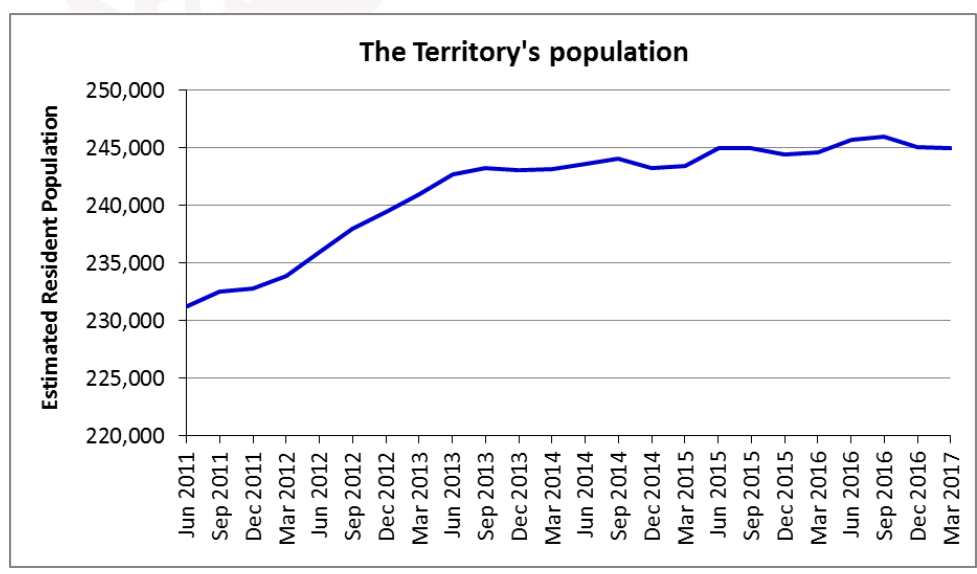
Territory Population Update

New Population Statistics for March 2017 & New Indigenous Population Statistics for June 2016

Summary

Population figures just published by the Australian Bureau of Statistics show that the total Estimated Resident Population of the Northern Territory stood at **244,990** at the end of March 2017, an increase of 338 over one year earlier. This represents a growth rate over the year of 0.1%. The population of 244,990 gives the Territory a 1.0% share of the national population of 24,511,773.

The graph below illustrates how the Territory's population has changed over the last few years. Following strong increases in 2012 and early 2013, population growth has been limited in recent years. Over the last two quarters the population has experienced decline.

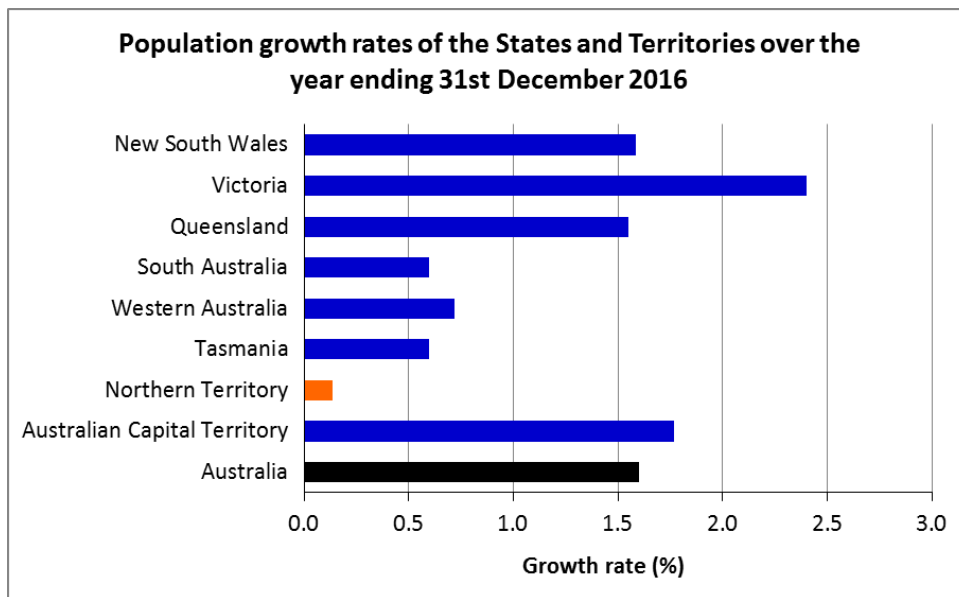


Note: Population statistics are for the end of each month shown
Source: ABS





The bar chart below shows how the Territory’s population growth rate during the 12 months to 31st March 2017 compares with that of the other States and Territories and Australia as a whole. The Territory’s population growth rate is the lowest of all jurisdictions.



Source: ABS

Indigenous and non-Indigenous population estimates

Also included in the latest data release by the Australian Bureau of Statistics are new Estimated Resident Populations for the Territory’s Indigenous and non-Indigenous populations at 30th June 2016. Readers are advised that these population numbers are more uncertain than the Estimated Resident Populations for the Territory’s population as a whole and should be used with caution. These estimates are only updated by the ABS every 5 years.

The Indigenous population of the Territory at 30th June 2016 was estimated to be **74,509**, representing 30.3% of the Territory’s population. This represents an increase of 5,659 (or 8.2%) since June 2011. The non-Indigenous population of the Territory in June 2016 was estimated to be **171,231** (69.7% of the population).

The Indigenous population of 74,509 gives the Territory a 9.3% share of the national Indigenous population of 798,381. The national Indigenous population grew by 128,645, or 19.2%, between 2011 and 2016.



What factors are driving population change in the Territory?

Population change in the Territory is the result of several demographic processes. These are:

- births
- deaths
- in-migration from interstate
- out-migration to interstate
- immigration from overseas
- emigration to overseas.

These six factors are often summarised as:

- natural change (births minus deaths)
- net interstate migration (in-migration minus out-migration)
- net overseas migration (immigration minus emigration).

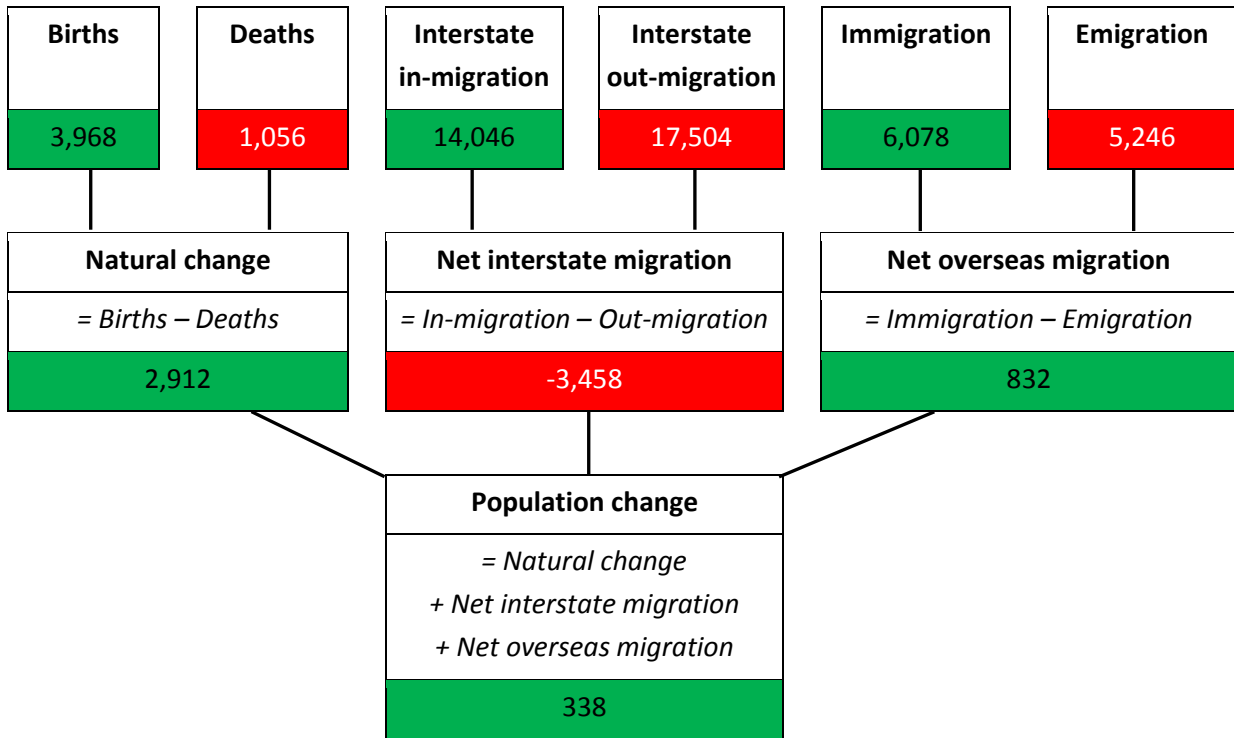
The diagram below shows how these factors of population change affected population growth during the 12 months to 31st March 2017. Processes which remove people from the Territory are shown in red; those which add people to the population are shown in green.

- During the year there were 3,968 births and 1,056 deaths to Territory residents, giving natural change of 2,912.
- There were an estimated 14,046 in-migration moves to the Territory from interstate, while there were 17,504 out-migrations to other parts of Australia. Net interstate migration was therefore -3,458.
- The Territory's population experienced immigration of 6,078 from overseas, while emigration to other countries was 5,246. Net overseas migration was therefore 832.
- Total population change over the year was estimated to be 338.
- Although overall population change was modest, the churn of population (numbers of people being added and removed from the population) was substantial. This is a long-established characteristic of the Territory's demography.



After Marina Strocchi

Factors affecting population change in the Territory during the year ending 31st March 2017



Source: calculated from ABS data

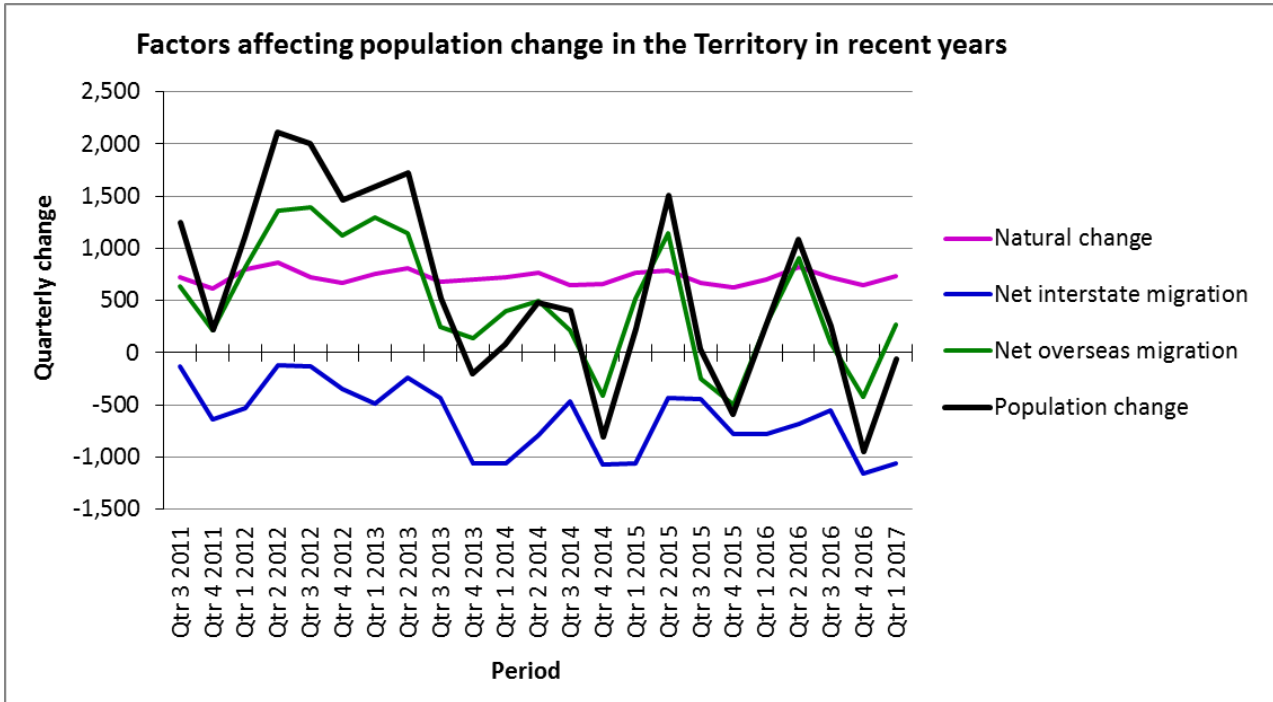
Note: Components of population change may not sum to total population change due to measurement errors

Factors affecting population change in recent years

Much of the volatility in the Territory’s population growth over the years is due to fluctuations in migration, which in part reflects fluctuations in the Territory’s economy. The graph below shows how natural change, net interstate migration, and net overseas migration have varied on a quarterly basis in recent years. The slow growth of the Territory’s population over the last few years is due to net interstate migration losses and lower levels of net overseas migration.



After Marina Strocchi



Note: Periods are quarters of the year; e.g. "Qtr 1 2016" refers to the first quarter of 2016

Source: ABS

Note: Components of population change may not sum to total population change due to measurement errors

Author

Dr Tom Wilson, Northern Institute, Charles Darwin University.

Data sources

All data are derived from the Australian Bureau of Statistics bulletin [Australian Demographic Statistics](#) (released quarterly and containing data up to a date six months prior to publication) and the online data service [ABS.Stat](#). Be aware that these statistics are *estimates*, not precise values.

Interested in finding out more about the Territory's population?

See the webpage of the [Demography & Growth Planning](#) team at the Northern Institute, and our blog, [demographyNorth](#).