



CDU Radicle Centre for STEM Engagement

Sponsorship Opportunities 2025



RADICLE
Science and Technology Engagement Centre



Acknowledgement of Country

Charles Darwin University acknowledges and respects the many Australian First Nations traditional custodians of the lands upon which our campuses and centres are located who have a continued cultural connection to traditional lands.

They are the first scientists and first innovators. They are the holders of knowledge that makes a critical contribution to the sustainability of local, national and global communities.

We offer our respect to Elders past, present and emerging and extend this to all First Nations people.



Director's message

The Territory's youth are among the most innovative and resilient in the world. The next generations will find a future where science and technology are the gateway to successful and fulfilling careers. Careers that will value their natural creative talents above all.

But are we fully equipping our future leaders with the tools and skills needed to succeed?

Imagine a place where families could take their kids to learn about amazing Territory Science and Technology projects. A Centre where schools know they can expect high quality experiences. A trailblazing Centre that takes science and technology to remote locations in the Territory and beyond. A Centre that prepares future scientists, engineers, and IT professionals.

When I was a child living in the Brazilian highlands, one of my favourite movies was "Young Einstein". I even believed that Einstein was originally from Australia! But what if it is true?

What if we have dozens of Einsteins growing up right now in the Territory, who could be the ones discovering a reliable clean source of energy or the cure for the next super bug?

That is why the CDU Radicle Centre for STEM engagement is so vital to the Territory. Radicle will ensure that our youth know that they can have great careers in Science, Technology, Engineering and Mathematics and that there is a pathway for them to achieve their dreams.

We warmly invite you to play an integral part in Radicle's landmark development journey. Join us on our mission to promote NT-based Science and Technology creating pathways for our future local leaders.

Thank you,

Dr Carla Eisemberg



Vice-Chancellor's message

Our vision at Charles Darwin University (CDU) is to be Australia's most connected university. We aim to make a difference in the Northern Territory, Australia and beyond by being courageous. I invite you to join us on this journey by supporting the creation of the Radicle Centre, which will be a thriving STEM exploration space. The centre will be located in the heart of Darwin city in our new campus Danala | Education and Community Precinct.

Currently, there is no state-of-the-art STEM engagement centre in the Northern Territory to educate and inspire young minds. The Radicle Centre will fill this gap and help improve science literacy in the region. According to the 2018 National Assessment Program for Science Literacy Performance, only 37% of Northern Territory school students in Year 6 were "at or above proficiency standards".

CDU is proud of its scientific strengths, which are evident in both teaching and research. We offer excellent teaching through the Faculty of Science and Technology, and we conduct scientific research in areas of importance to the Territory and its people.

Our University's success story begins well before a student begins their tertiary education journey or steps on campus. It begins when a child's curiosity is sparked by a great science story or experience that inspires them to become young Einsteins.

The CDU Radicle Centre could be a catalyst for improving Territory school students' STEM proficiency levels working in collaboration with local schools and industry. Please join us on this inspirational STEM skills development journey and together we can make a difference in the Northern Territory and beyond.

Thank you,

Professor Scott Bowman AO
Vice-Chancellor and President

RADICLE

Radicle is the scientific name given to the first root that appears when a seed germinates.

It represents the core aims of our Centre to unleash the potential of our youth, and to increase the reach of Science and Technology to each and every child in the Territory.

The CDU Radicle Centre will:



Create hands-on STEM education opportunities for young Territorians



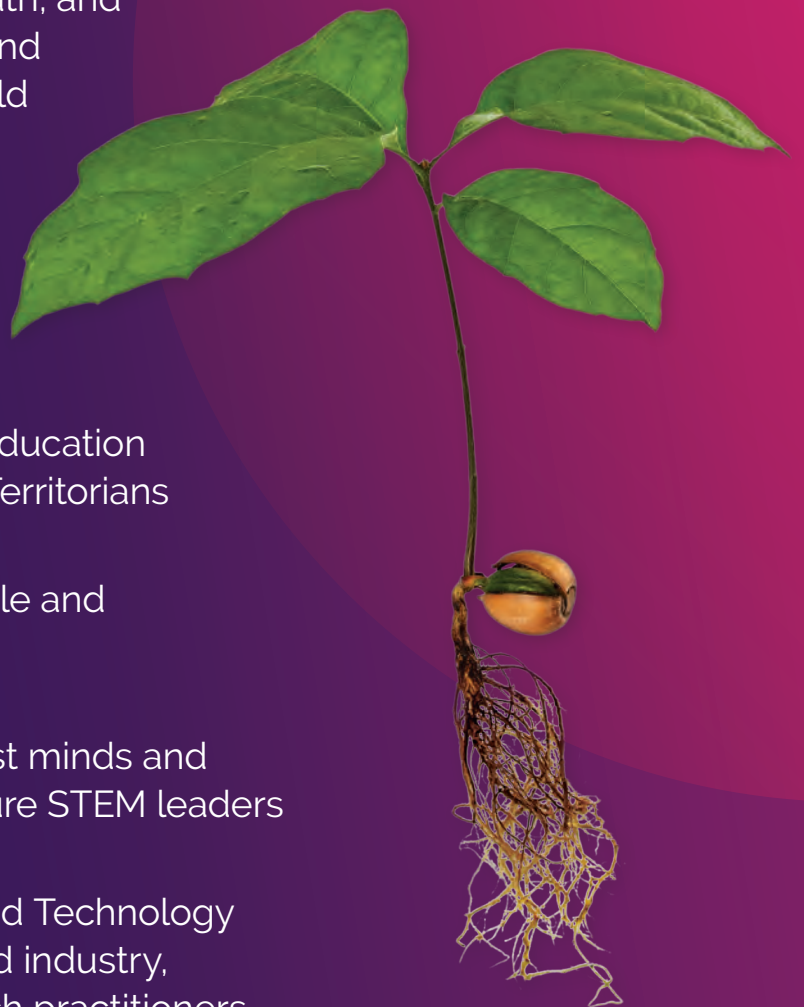
Reach First Nations people and remote areas



Capture the NT's brightest minds and provide pathways for future STEM leaders



Celebrate the Science and Technology engagement of NT-based industry, government, and outreach practitioners



The Journey



Our CDU STEM (Science, Technology, Engineering and Mathematics) outreach team's experience and network is recognised nationally. We are considered trailblazers in delivering engaging STEM outreach activities especially in Australia's remotest communities. We are confident that the NT STEM ecosystem it is now primed for Radicle, a centralised hub to facilitate access to STEM education, experiences, resources, and opportunities.

2019

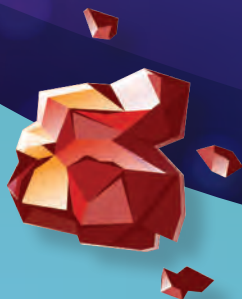
CDU STEM outreach team begins collaborating with the Inspired NT program that aims to build a strong open relationship between science and society.

2020

CDU team become innovators in the NT STEM outreach space, under Inspired NT, during the COVID-19 lockdown.

2021

CDU's engagement with NT organisations during National Science Week doubles from 21 to 41.



What NT students say about CDU's STEM outreach programs:

“

"I learnt about clouds, turtle eggs and litter, microscope (seeing our hands that seemed clean wasn't)."

”

"I enjoyed seeing students learn from each other. The older students teaching the younger students to code for soccer."

”

"I really enjoyed looking around the CDU campus and looking at the robotic arm. I learnt a lot about what you can study at CDU and where different people study depending on their PhD."

2022

Annual CDU STEM roadshows to remote schools from Darwin to Alice Springs established. Over 30 remote community projects delivered annually.

The Territory reached over 100 events held for National Science Week.

2023

5.4% of all nationally registered events on the official Science Week website are Territory-based although NT represents only 1% of Australian population.

2024

NT Science Week awards established in 2021 by the CDU STEM team is renamed as the Radicle Science Awards NT. CDU and Inspired NT partner with 95 Territory organisations during National Science Week.

What NT teachers and partner organisations say about CDU's STEM outreach programs:

"It was a fantastic experience for our students to come into Darwin from West Arnhem Land and participate in hands on STEM activities that they otherwise wouldn't get to participate in. Students had a great time creating and racing their solar cars and meeting other students from across the Northern Territory! Thank you for a wonderful experience."

Adelaide Ford – Nawarddeken Academy

"Arafura Swamp Indigenous Rangers have been working with CDU's STEM Engagement team since our first science week event in 2021. In remote Aboriginal communities, the ability to engage children in STEM not only widens their knowledge but provides motivation and pathways for future success in a region where opportunities are limited. Rangers enjoy working with the CDU STEM Engagement team and showing children how traditional knowledge and contemporary science complement each other and can be combined in looking after country."

Helen Truscott – CEO of the Aboriginal Swamp Rangers Aboriginal Corporation

"Our girls (young women) returned so grateful, enthused and excited by the event that they couldn't stop talking about it. I have no doubt that they would like to be a more active participant in coming years but even if that doesn't eventuate, they have an experience that will stay with them long into their futures."

Greg Hollis – Tiwi College



Our Vision

The Radicle Centre will be a unique STEM exploration space located in Darwin City at the Danala | CDU Education and Community Precinct. It will be a beacon of excellence in STEM engagement and highlight the Northern Territory's strengths in STEM. It will also be the first Australian STEM engagement centre north of Brisbane.

The Centre will include interactive Science and Technology exhibits that will be rotated annually. Major supporters will be offered areas to display their own STEM exhibits and receive support from Centre experts to create highly engaging displays. Among these displays, we plan to have dedicated exhibits for First Nations STEM and NT Women in STEM.

Our vision is to ensure that entry is free for Territory families.

The Centre will include a fully equipped workshop offering tailored STEM experiences to schools. It will also host professional development opportunities for STEM professionals and teachers, and public events.

Radicle Centre is envisioned as a STEM hub and a supporting body to the many STEM professionals, students and outreach providers based in the Northern Territory. The Centre will also host the annual Radicle Science Awards NT, celebrating Territory excellence in science endeavours.

Reflecting the concept of extending its roots, Radicle's reach will extend beyond this Centre to remote workshops and exhibits with a fully equipped vehicle to provide remote schools with STEM resources and activities.



"The future prosperity of the NT relies on us unlocking science and technology opportunities to everyone in our community. CDU is well positioned as the Territory's leader in STEM education delivery and research to create Northern Australia's first student engagement space for STEM."

Professor Suresh Thennadil – Pro Vice-Chancellor of CDU's Faculty of Science & Technology

Timeline

The CDU Radicle Centre for STEM Engagement will be created in two phases (Implementation and Expansion), expanding outwards to remote NT settings as our roots extend, deepening our connection to place as our branches reach into new areas.



August 2025

Radicle hosts the National Science Week Launch NT.

November 2024

Radicle Roadshow takes workshops to remote schools.

August 2024

Launch of workshops with local schools.

2026 to 2030

Radicle programs continue locally and are expanded nationally and globally.

March 2025

Radicle exhibits and exploration space are open to the public.

October 2024

Radicle hosts the Science Awards NT night.

**IMPLEMENTATION
PHASE**



Who can connect with the Radicle Vision

The CDU Radicle Centre will showcase and strengthen the NT STEM ecosystem by providing a central point of contact for STEM engagement and training pathways. The Centre will also provide the structure and strategy needed to support schools and communities with their STEM curriculum.

The Radicle Centre will appeal to a broad audience:

- ✓ School students
- ✓ University students
- ✓ Families
- ✓ Visitors to the Territory
- ✓ NT educators, STEM leaders and STEM professionals
- ✓ Territory STEM outreach providers
- ✓ Local government, industries and organisations



“This University has the greatest future of any University in Australia. We are close to Asia, we are in Darwin, a multi-racial city, where students can feel quite relaxed and of course we have brilliant professors and students. I think it's just a matter of time before we will be one of the most important universities in Australia. The CDU Radicle Centre enriches this overall university vision.”

The Hon. Austin Asche AC KStJ KC – patron of CDU STEM outreach activities

Organisational Structure

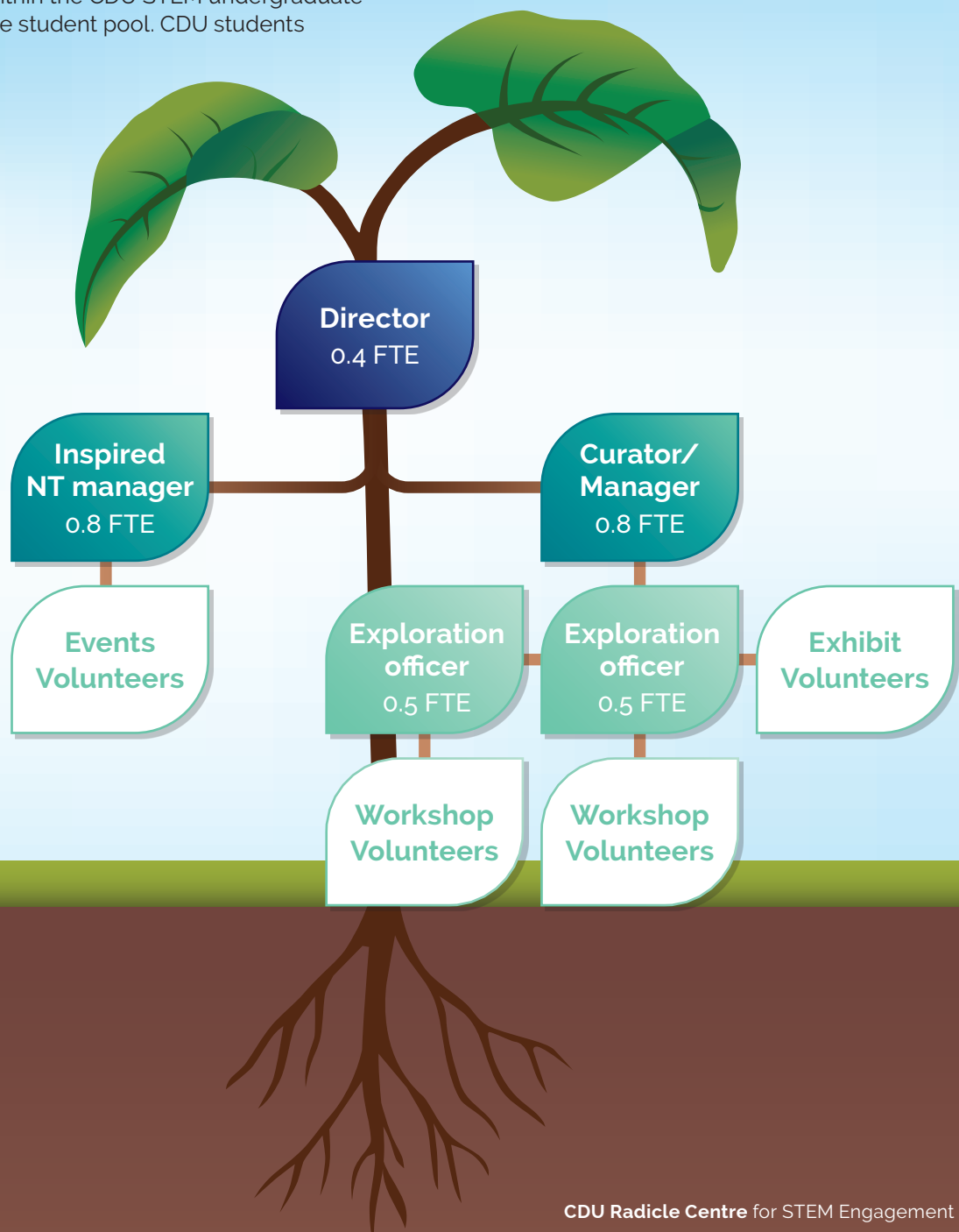
Radicle will operate under the leadership of a Director who will oversee all its STEM outreach programs, including those collaborated with Inspired NT. The Director is also responsible for organising annual exhibitions and on-site programs.

Radicle will have a **Curator of Science Explorations** responsible for managing its STEM exploration space, exhibitions, and staff. Initially, two part-time Exploration Officers will be employed to develop and run STEM workshops for schools and general public. Volunteers will assist with overseeing exhibits, STEM workshops and events.

Exploration Officers and most volunteers will be recruited from within the CDU STEM undergraduate and postgraduate student pool. CDU students

studying the course unit Communication and Engagement in Science and Technology will complete placements at the Radicle Centre, on a Radicle roadshow or with the Museum and Art Gallery Northern Territory (MAGNT).

General public, especially retired science enthusiasts, will be welcome to volunteer in the exhibition space.







We warmly invite you to partner with
CDU on this innovative STEM skills
development project for the Territory.

You make CDU



Support the future of STEM with the CDU Radicle Centre!

The Radicle Centre needs your support to meaningfully engage with the Northern Territory's young and upcoming STEM stars in the next few years. You could support Radicle by making a single contribution or by pledging more dedicated support.

	 Radicle Boab	 Radicle Eucalyptus	 Radicle Pandanus	 Radicle Cycad
Investment opportunity (per year)	\$100,000 ex gst	\$50,000 ex gst	\$20,000 ex gst	\$5,000 ex gst
Logo	Logo as a Boab sponsor on Radicle Centre, Radicle website and print materials.	Logo as a Eucalyptus sponsor on Radicle Centre, Radicle website and print materials.	Logo as a Pandanus sponsor on Radicle Centre, Radicle website and print materials.	Logo as a Cycad sponsor on Radicle website and print materials.
Network and display opportunities	Invitation to participate in networking and STEM outreach events (e.g.: Science Week fair).	Invitation to participate in networking and STEM outreach events (e.g.: Science Week fair).	Invitation to participate in networking and STEM outreach events (e.g.: Science Week fair).	Invitation to participate in networking and STEM outreach events (e.g.: Science Week fair).
Events	Invitation to Radicle events, VIP seats at the Radicle Awards, opportunity to speak at the awards.	Invitation to Radicle events and VIP seats at the Radicle Awards.	Invitation to Radicle events and VIP seats at the Radicle Awards.	Invitation to Radicle events.
Social media posts	6 social media posts. 6 social media reposts/mentions.	4 social media posts. 4 social media reposts/mentions.	2 social media posts. 2 social media reposts/mentions.	1 social media post. 1 social media repost/mention.
Public engagement	1 Exhibit and 4 workshop sessions at the Radicle Centre focusing on a theme chosen by sponsor.	4 workshop sessions at the Radicle Centre focusing on a theme chosen by sponsor.	2 workshop sessions at the Radicle Centre focusing on a theme chosen by sponsor.	1 workshop session at the Radicle Centre focusing on a theme chosen by sponsor.
School workshop development and delivery	Workshop created and delivered at remote, rural and Darwin schools focusing on a theme chosen by sponsor.	Workshop created and delivered at rural and Darwin schools focusing on a theme chosen by sponsor.	Workshop created and delivered at Darwin schools focusing on a theme chosen by sponsor.	
School Incursion	Invitation to sponsors to directly participate in 6 in-class sessions.	Invitation to sponsors to directly participate in 4 in-class sessions.	Invitation to sponsors to directly participate in 2 in-class sessions.	

We also welcome tax free donations, please contact our office to discuss.



All sponsors of the Radicle Centre will also become a part of the University's Friends of CDU donor stewardship program.

Visit: cdu.edu.au/alumni-giving/giving/friends-cdu

We truly value your support. The Radicle Centre will feature an artist-designed donor recognition wall acknowledging all philanthropic contributions. This will be a living display that is added to as the branches and roots of philanthropic contributions to the Centre extend.

How to donate

Please contact Dr Carla Eisemberg, Director CDU Radicle Centre & Senior Lecturer STEM Pathways if you would like to discuss how you could support the CDU Radicle Centre.

Email: Carla.Eisemberg@cdu.edu.au

Phone: +61 8 8946 7721

Mobile: 0401 737 884

Website: www.cdu-radicle-centre-stem-engagement

CHARLES
DARWIN
UNIVERSITY



Community Connection
Charles Darwin University
Northern Territory

Postal address:
Community Connection Office
CDU Campus, Ellengowan Drive
Northern Territory, Australian 0810

CRICOS Provider No. 00300K (NT)
TEQSA Provider ID PRV12069 | Category Australian University
RTO Provider No. 0373
ABN 54 093 513 649

Sponsorship Opportunities 2025 v2.0



RADICLE
Science and Technology Engagement Centre